



Guide Price
£495,000

Freehold

3x  1x  1x 

**Westlawn Farm, Loose
Valley, Loose,
Maidstone, Kent, ME15**

OVER 60?

Secure this property
for up to **59% less!**

Wards
Helping you move forwards



Main features

- **Wealth of period features and character throughout**
- **Unique grounds consisting of an undisturbed, serene mill pond and verdant garden full of life, offering a peaceful and enviable setting**
- **Garage and off road parking**
- **Truly stunning, tranquil location within the Loose Valley conservation area, surrounded by picturesque countryside and wildlife**
- **NO FORWARD CHAIN**

Accommodation

GROUND FLOOR

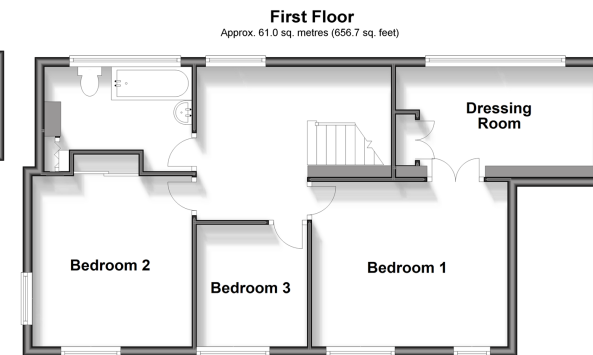
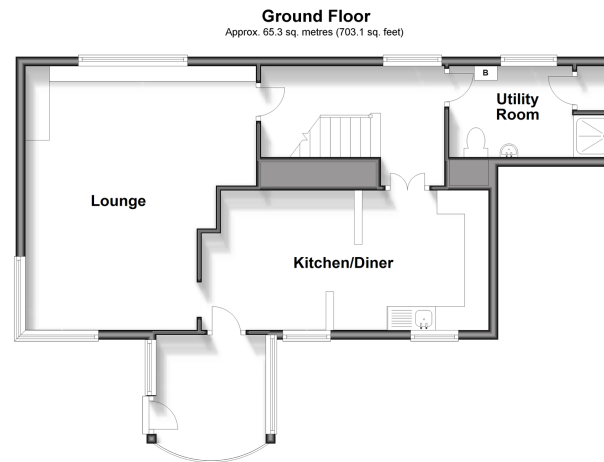
Entrance Porch
Lounge: 16'1 x 15'0 (4.91m x 4.58m)
Kitchen/Diner: 19'1 x 9'1 (5.82m x 2.77m)
Hallway
Utility Room: 8'1 x 6'0 (2.47m x 1.83m)

FIRST FLOOR

Landing
Bedroom 1: 13'1 x 11'1 (3.99m x 3.38m)
Dressing Room: 12'1 x 6'1 (3.69m x 1.86m)
Bedroom 2: 11'1 x 11'0 (3.38m x 3.36m)
Bedroom 3: 8'1 x 7'1 (2.47m x 2.16m)
Bathroom: 9'1 x 7'0 (2.77m x 2.14m)

OUTSIDE

Front and Rear Gardens
Garage and Off Road Parking
Mill Pond
Shed



Call Loose - 01622 744067 ■ wardsofKent.co.uk

■ Legal advice should be taken to verify fixtures/fittings, planning, alterations and/or lease details
■ Through a Homewise Home For Life Plan people aged 60+ can secure this property for up to 59% less, by purchasing a Lifetime Lease.

■ Appliances & services are untested, dimensions are approximate and floor plans are not to scale



13021914/20240427/AY/VMK