

OVER 60?

Secure this property
for up to **59% less!**



Price
£675,000
Freehold

5x  3x  2x 

Seladine Gardens, Coxheath, Maidstone,
Kent, ME17

Wards
Helping you move forwards



Main features

- **Remainder of NHBC warranty remaining**
- **Incredible size kitchen/diner, perfect for entertaining and sure to become the hub of the home**
- **Tucked away in a quiet position on a popular modern development, overlooking greenery, offering a peaceful setting**
- **Short walk to local shops, amenities, sought after Coxheath Primary School and picturesque countryside**
- **NO FORWARD CHAIN**

Accommodation

GROUND FLOOR

Entrance Hall
 Downstairs Cloakroom: 5'1 x 3'1 (1.55m x 0.94m)
 Lounge: 15'1 x 14'1 (4.60m x 4.30m)
 Study: 10'0 x 9'0 (3.05m x 2.75m)
 Kitchen/Diner: 31'1 x 13'0 (9.48m x 3.97m)
 Utility Room: 10'0 x 6'1 (3.05m x 1.86m)

FIRST FLOOR

Landing
 Bedroom 1: 20'1 x 12'0 (6.13m x 3.66m)
 En Suite Shower Room 1: 8'1 x 4'1 (2.47m x 1.25m)
 Bedroom 2: 12'1 x 10'0 (3.69m x 3.05m)
 En Suite Shower Room 2: 6'1 x 4'1 (1.86m x 1.25m)
 Bedroom 3: 10'0 x 9'0 (3.05m x 2.75m)
 Bedroom 4: 10'0 x 9'1 (3.05m x 2.77m)
 Bedroom 5: 10'0 x 9'0 (3.05m x 2.75m)
 Bathroom: 6'1 x 6'1 (1.86m x 1.86m)

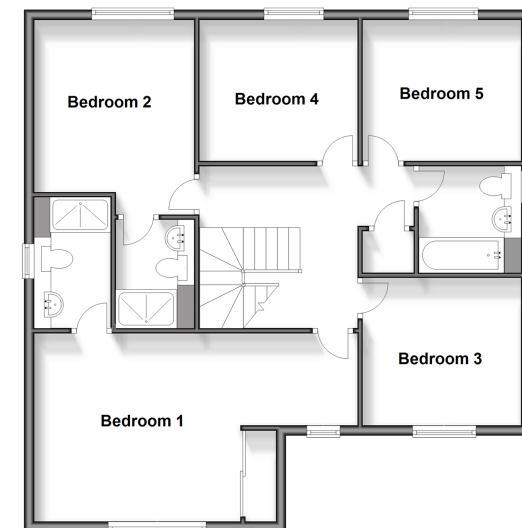
OUTSIDE

Double Garage and Driveway
 Front and Rear Gardens

Ground Floor
 Approx. 87.8 sq. metres (944.9 sq. feet)



First Floor
 Approx. 86.0 sq. metres (926.0 sq. feet)



Call Loose - 01622 744067 ■ wardsofkent.co.uk

■ Legal advice should be taken to verify fixtures/fittings, planning, alterations and/or lease details
 ■ Through a Homewise Home For Life Plan people aged 60+ can secure this property for up to 59% less, by purchasing a Lifetime Lease.

■ Appliances & services are untested, dimensions are approximate and floor plans are not to scale