



**Price**  
**£275,000**

**Freehold**

2x  1x  1x 

**Roman Way, Boughton  
Monchelsea, Maidstone,  
Kent, ME17**

**OVER 60?**

Secure this property  
for up to **59% less!**

*Wards*  
Helping you move forwards





## Main features

- Well presented house, with allocated parking
- Ideal first time buy, buy to let investment, or for those looking to downsize
- Set in a quiet cul de sac
- Short walk to local shops and amenities
- Picturesque countryside nearby

## Accommodation

### GROUND FLOOR

Entrance Hall  
 Kitchen: 9'8 x 5'2 (2.95m x 1.58m)  
 Lounge/Diner: 15'2 x 9'3 (4.63m x 2.82m)  
 Downstairs Cloakroom: 6'3 x 2'8 (1.91m x 0.81m)

### FIRST FLOOR

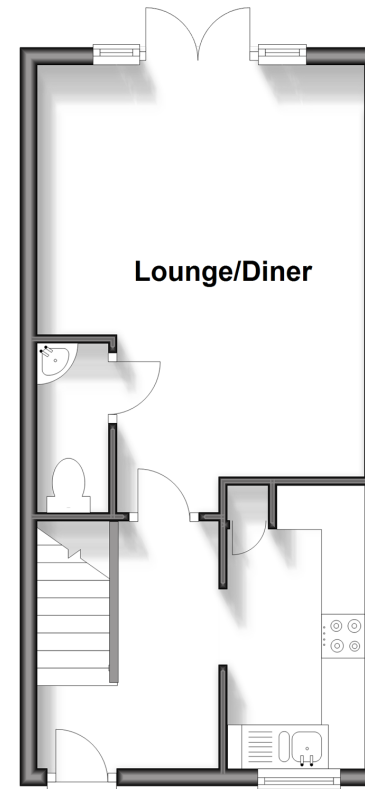
Landing  
 Bedroom 1: 10'6 x 8'9 (3.20m x 2.67m)  
 Bedroom 2: 9'6 x 8'7 (2.90m x 2.62m)  
 Bathroom: 7'2 x 5'5 (2.19m x 1.65m)

### OUTSIDE

Front and Rear Gardens  
 Allocated Parking  
 Shed

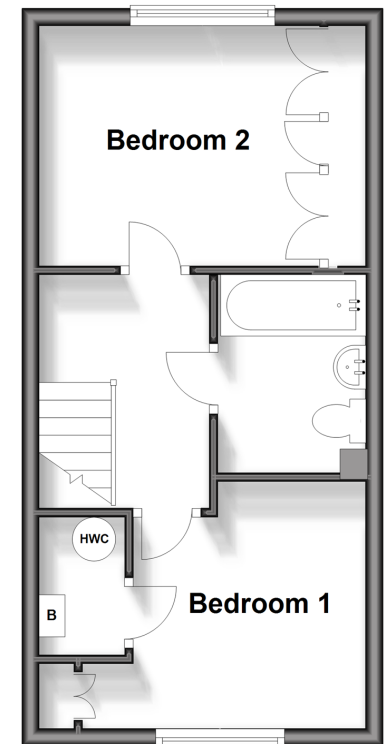
### Ground Floor

Approx. 30.3 sq. metres (326.2 sq. feet)



### First Floor

Approx. 30.3 sq. metres (326.2 sq. feet)



**Call Loose - 01622 744067 ■ [wardsofkent.co.uk](http://wardsofkent.co.uk)**

- Legal advice should be taken to verify fixtures/fittings, planning, alterations and/or lease details
- Appliances & services are untested, dimensions are approximate and floor plans are not to scale
- Through a Homewise Home For Life Plan people aged 60+ can secure this property for up to 59% less, by purchasing a Lifetime Lease.



13021919/20240405/AS/AS