



**Guide Price**  
**£450,000**

**Freehold**

3x  1x  1x 

**Shernolds, Maidstone,  
Kent, ME15**

**OVER 60?**

Secure this property  
for up to **59% less!**

*Wards*  
Helping you move forwards





## Main features

- **Perfect opportunity to redecorate and create your dream home**
- **Short walk to sought after primary schools, local shops and amenities**
- **Picturesque Loose Valley conservation area nearby**
- **Only a short drive to Maidstone town centre where you can enjoy shops, restaurants and trains into London**
- **NO FORWARD CHAIN**

## Accommodation

### GROUND FLOOR

Entrance Hall

Lounge: 14'10 x 12'5 (4.52m x 3.79m)

Dining Area: 10'7 x 6'6 (3.23m x 1.98m)

Kitchen: 10'7 x 7'6 (3.23m x 2.29m)

Bedroom 1: 14'9 x 10'0 (4.50m x 3.05m)

Bathroom: 10'9 x 5'1 (3.28m x 1.55m)

Separate Toilet

### FIRST FLOOR

Landing

Bedroom 2: 13'5 x 12'4 (4.09m x 3.76m)

Bedroom 3: 10'8 x 10'1 (3.25m x 3.08m)

Eaves 1

Eaves 2

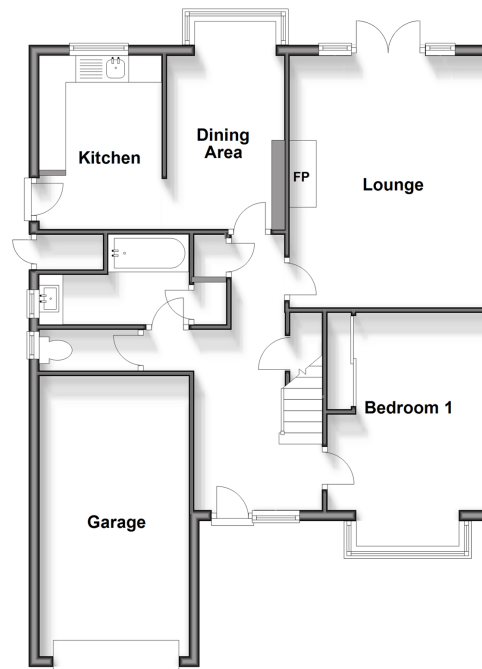
### OUTSIDE

Garage and Driveway

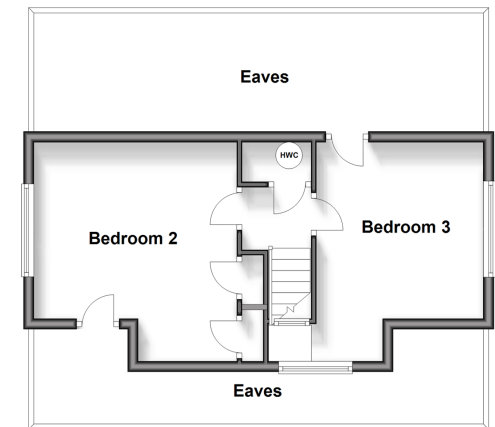
Front and Rear Garden

Shed

**Ground Floor**  
Approx. 80.9 sq. metres (870.4 sq. feet)



**First Floor**  
Approx. 31.7 sq. metres (340.8 sq. feet)



**Call Loose - 01622 744067 ■ [wardsofkent.co.uk](http://wardsofkent.co.uk)**

■ Legal advice should be taken to verify fixtures/fittings, planning, alterations and/or lease details  
■ Through a Homewise Home For Life Plan people aged 60+ can secure this property for up to 59% less, by purchasing a Lifetime Lease.

■ Appliances & services are untested, dimensions are approximate and floor plans are not to scale