



OVER 60?

Secure this property
for up to **59% less!**

Price

£360,000

Freehold

3x  1x  1x 

**Well Street, Loose,
Maidstone, Kent, ME15**

Wards
Helping you move forwards



Main features

- Well presented 1920's house in an enviable village location
- Large, bright and airy lounge, perfect for relaxing in the evenings
- Private rear garden, ideal for keen gardeners
- Sociable open plan kitchen, dining area and conservatory, a superb entertaining space
- Tranquil setting in picturesque Loose village on the doorstep of the scenic conservation area and walking distance to sought after Loose Primary School, Post Office/shop and country pub

Accommodation

GROUND FLOOR

Entrance Porch
 Lounge: 17'0 x 11'0 (5.19m x 3.36m)
 Kitchen: 13'1 x 11'0 (3.99m x 3.36m)
 Dining Area: 9'1 x 5'0 (2.77m x 1.53m)
 Conservatory: 9'1 x 9'0 (2.77m x 2.75m)
 Rear Lobby
 Downstairs Cloakroom: 5'0 x 3'0 (1.53m x 0.92m)

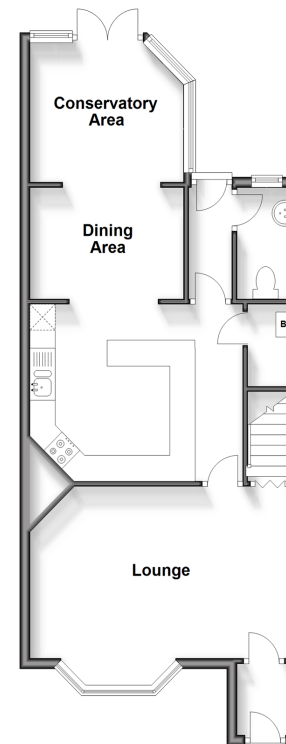
FIRST FLOOR

Landing
 Bedroom 1: 13'0 x 9'1 (3.97m x 2.77m)
 Bedroom 2: 10'1 x 9'1 (3.08m x 2.77m)
 Bedroom 3: 9'1 x 7'1 (2.77m x 2.16m)
 Bathroom: 7'0 x 5'0 (2.14m x 1.53m)

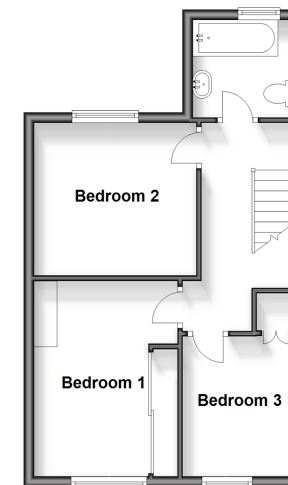
OUTSIDE

Garage and Driveway
 Front and Rear Gardens

Ground Floor
 Approx. 56.7 sq. metres (610.8 sq. feet)



First Floor
 Approx. 39.1 sq. metres (421.2 sq. feet)



Call Loose - 01622 744067 ■ wardsofkent.co.uk

■ Legal advice should be taken to verify fixtures/fittings, planning, alterations and/or lease details
 ■ Through a Homewise Home For Life Plan people aged 60+ can secure this property for up to 59% less, by purchasing a Lifetime Lease.

■ Appliances & services are untested, dimensions are approximate and floor plans are not to scale



13021929/20240501/AY/VMK