



**OVER 60?**

Secure this property  
for up to **59% less!**

**Guide Price**  
**£290,000**

**Freehold**

2x  1x  1x 

**Bridge Cottages, The  
Quarries, Boughton  
Monchelsea, Maidstone,  
Kent, ME17**

*Wards*  
Helping you move forwards





## Main features

- Charming Grade II character cottage in a tranquil setting
- Generous size garden, perfect for the summer months
- Useful cellar that could be converted into an additional space
- Semi rural location, with local shops and bus stop nearby, offering the best of both worlds
- Located in the picturesque conservation area in Boughton Monchelsea, with scenic walks on your doorstep

## Accommodation

### GROUND FLOOR

Lounge: 11'1 x 11'0 (3.38m x 3.36m)  
Dining Area: 11'0 x 9'0 (3.36m x 2.75m)  
Kitchen: 9'1 x 6'1 (2.77m x 1.86m)  
Shower Room: 6'1 x 4'1 (1.86m x 1.25m)

### BASEMENT

Cellar: 11'1 x 10'0 (3.38m x 3.05m)

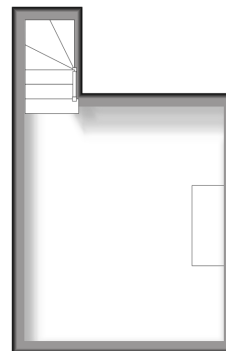
### FIRST FLOOR

Landing  
Bedroom 1: 12'0 x 11'0 (3.66m x 3.36m)  
Bedroom 2: 9'0 x 8'0 (2.75m x 2.44m)

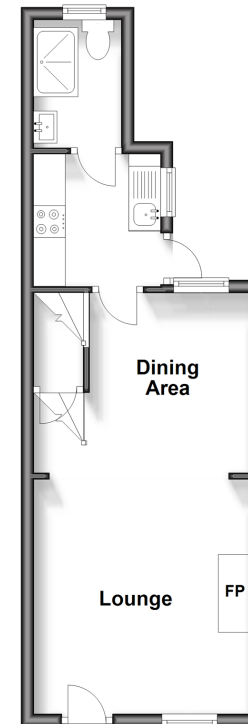
### OUTSIDE

Front and Rear Gardens

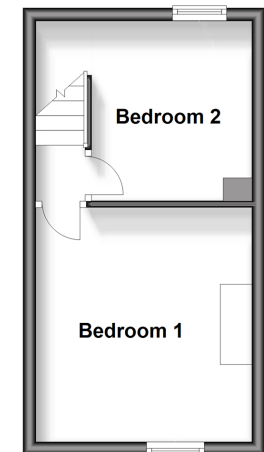
**Basement**  
Approx. 12.4 sq. metres (133.5 sq. feet)



**Ground Floor**  
Approx. 29.6 sq. metres (318.3 sq. feet)



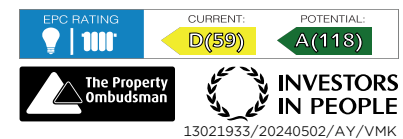
**First Floor**  
Approx. 22.4 sq. metres (241.4 sq. feet)



**Call Loose - 01622 744067 ■ [wardsofkent.co.uk](http://wardsofkent.co.uk)**

■ Legal advice should be taken to verify fixtures/fittings, planning, alterations and/or lease details  
■ Through a Homewise Home For Life Plan people aged 60+ can secure this property for up to 59% less, by purchasing a Lifetime Lease.

■ Appliances & services are untested, dimensions are approximate and floor plans are not to scale



13021933/20240502/AY/VMK