



**Guide Price**  
**£330,000**

**Freehold**

3x  2x  1x 

**Furfield Chase,  
Boughton Monchelsea,  
Maidstone, Kent, ME17**

**OVER 60?**

Secure this property  
for up to **59% less!**

*Wards*  
Helping you move forwards





## Main features

- **Well presented, modern family home**
- **Allocated parking**
- **Located in a quiet spot on a popular modern development in Boughton Monchelsea**
- **Generous room sizes and a useful en suite shower room**
- **Short walk to local shops, amenities and bus stop, with picturesque countryside nearby**

## Accommodation

### GROUND FLOOR

Entrance Hall  
Downstairs Cloakroom: 4'6 x 3'2 (1.37m x 0.97m)  
Lounge: 14'8 x 12'6 (4.47m x 3.81m)  
Kitchen : 9'9 x 7'4 (2.97m x 2.24m)  
Dining Area: 10'6 x 8'3 (3.20m x 2.52m)

### FIRST FLOOR

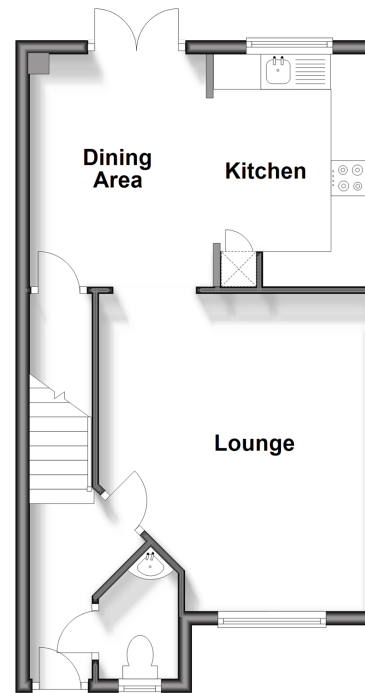
Landing  
Bedroom 1: 11'8 x 10'5 (3.56m x 3.18m)  
En Suite Shower Room: 5'8 x 5'1 (1.73m x 1.55m)  
Bedroom 2: 9'7 x 7'8 (2.92m x 2.34m)  
Bedroom 3: 7'8 x 6'3 (2.34m x 1.91m)  
Bathroom: 7'4 x 5'3 (2.24m x 1.60m)

### OUTSIDE

Front and Rear Gardens  
Allocated Parking  
Workshop

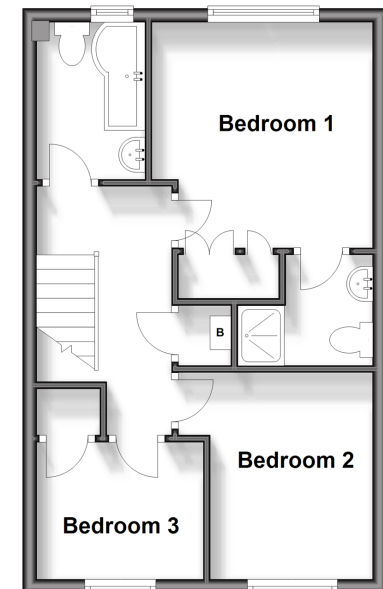
### Ground Floor

Approx. 40.4 sq. metres (434.7 sq. feet)



### First Floor

Approx. 38.3 sq. metres (412.6 sq. feet)



**Call Loose - 01622 744067 ■ [wardsofkent.co.uk](http://wardsofkent.co.uk)**

■ Legal advice should be taken to verify fixtures/fittings, planning, alterations and/or lease details  
■ Through a Homewise Home For Life Plan people aged 60+ can secure this property for up to 59% less, by purchasing a Lifetime Lease.

■ Appliances & services are untested, dimensions are approximate and floor plans are not to scale



13021936/20240325/KIR/AS