



Price
£475,000

Freehold

3x  1x  1x 

**Pickering Street, Loose,
Maidstone, Kent, ME15**

OVER 60?

Secure this property
for up to **59% less!**

Wards
Helping you move forwards



Main features

- Beautifully presented home in a sought after location
- Potential to convert the large loft subject to planning and consents
- Generous room sizes throughout
- Immaculately manicured, private rear garden, ideal for keen gardeners
- Short walk to local shops, amenities and the picturesque Loose Valley conservation area

Accommodation

GROUND FLOOR

Entrance Hall

Lounge: 14'0 x 12'0 (4.27m x 3.66m)

Dining Room: 12'0 x 7'0 (3.66m x 2.14m)

Kitchen: 11'1 x 6'1 (3.38m x 1.86m)

Conservatory: 10'1 x 9'0 (3.08m x 2.75m)

Bedroom 1: 12'1 x 11'1 (3.69m x 3.38m)

Bedroom 2: 11'0 x 8'1 (3.36m x 2.47m)

Bedroom 3: 9'1 x 8'1 (2.77m x 2.47m)

Bathroom: 11'0 x 7'0 (3.36m x 2.14m)

OUTSIDE

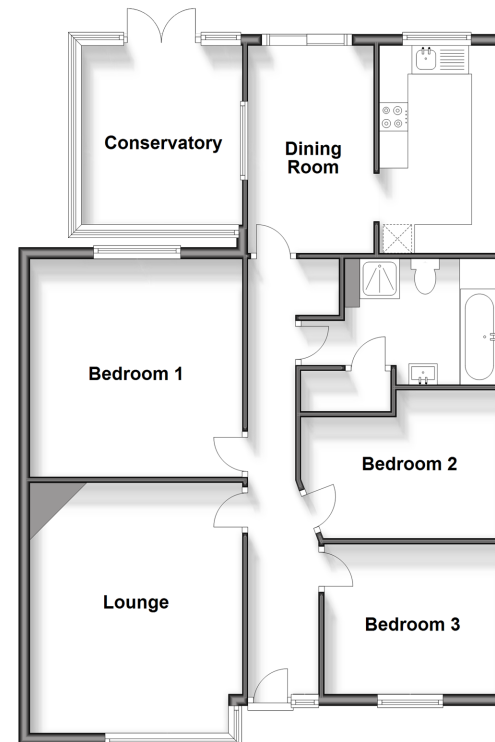
Off Road Parking

Front and Rear Gardens

Shed

Pond

Ground Floor
Approx. 90.9 sq. metres (978.5 sq. feet)



Call Loose - 01622 744067 ■ wardsofkent.co.uk

- Legal advice should be taken to verify fixtures/fittings, planning, alterations and/or lease details
- Through a Homewise Home For Life Plan people aged 60+ can secure this property for up to 59% less, by purchasing a Lifetime Lease.

- Appliances & services are untested, dimensions are approximate and floor plans are not to scale



13021937/20240509/KIR/VMK