



**Guide Price**  
**£400,000**

**Freehold**

3x  2x  1x 

**Foxglove Lane,  
Coxheath, Maidstone,  
Kent, ME17**

**OVER 60?**

Secure this property  
for up to **59% less!**

*Wards*  
Helping you move forwards





## Main features

- Beautifully presented home on a popular, modern development
- Remainder of Premier Homes warranty for peace of mind
- Sunny rear garden
- Popular village location, short walk to Coxheath Primary School, local shops and amenities
- Scenic countryside on your doorstep

## Accommodation

### GROUND FLOOR

Entrance Hall  
Downstairs Cloakroom: 6'1 x 3'0 (1.86m x 0.92m)  
Kitchen: 11'0 x 9'1 (3.36m x 2.77m)  
Lounge/Diner: 17'1 x 16'1 (5.21m x 4.91m)

### FIRST FLOOR

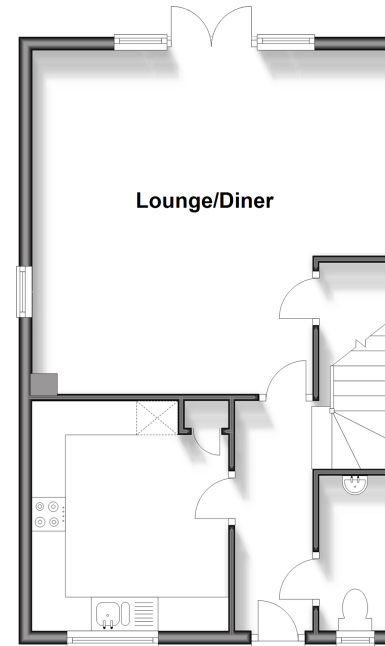
Landing  
Bedroom 1: 14'0 x 10'1 (4.27m x 3.08m)  
En Suite Shower Room: 7'0 x 6'0 (2.14m x 1.83m)  
Bedroom 2: 10'0 x 9'1 (3.05m x 2.77m)  
Bedroom 3: 10'0 x 7'0 (3.05m x 2.14m)  
Bathroom: 6'1 x 6'1 (1.86m x 1.86m)

### OUTSIDE

2 Allocated Parking Spaces  
Front and Rear Gardens  
Shed

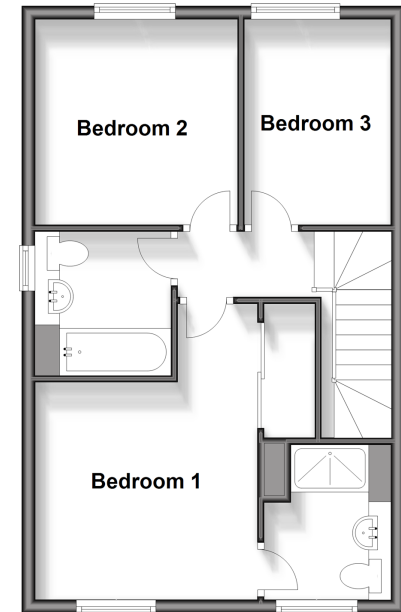
### Ground Floor

Approx. 45.9 sq. metres (494.5 sq. feet)



### First Floor

Approx. 45.8 sq. metres (492.7 sq. feet)



**Call Loose - 01622 744067 ■ [wardsof Kent.co.uk](http://wardsof Kent.co.uk)**

■ Legal advice should be taken to verify fixtures/fittings, planning, alterations and/or lease details  
■ Through a Homewise Home For Life Plan people aged 60+ can secure this property for up to 59% less, by purchasing a Lifetime Lease.

■ Appliances & services are untested, dimensions are approximate and floor plans are not to scale



13021942/20240501/VMK/VMK