



Price
£350,000

Freehold

3x  2x  1x 

**Melrose Close, Loose,
Maidstone, Kent, ME15**

OVER 60?

Secure this property
for up to **59% less!**

Wards
Helping you move forwards



Main features

- Private and secure rear garden
- All bedrooms are spacious and double in size
- Allocated parking
- Versatile and spacious accommodation spread over 3 floors
- Located on a popular, modern development, short walk to sought after Loose Primary School, local shops, amenities and the picturesque Loose Valley conservation area

Accommodation

GROUND FLOOR

Entrance Hall
Dining Area: 12'1 x 8'1 (3.69m x 2.47m)
Kitchen/Breakfast Room: 15'1 x 9'0 (4.60m x 2.75m)
Utility Room: 6'1 x 5'0 (1.86m x 1.53m)
Downstairs Cloakroom: 5'1 x 2'1 (1.55m x 0.64m)

FIRST FLOOR

Landing
Lounge: 15'0 x 12'0 (4.58m x 3.66m)
Bedroom 3: 15'0 x 8'1 (4.58m x 2.47m)
Bathroom: 6'1 x 5'1 (1.86m x 1.55m)

SECOND FLOOR

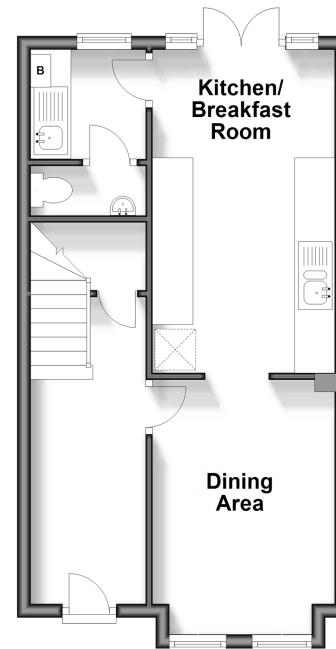
Landing
Bedroom 1: 13'0 x 11'0 (3.97m x 3.36m)
En Suite Shower Room: 6'1 x 5'1 (1.86m x 1.55m)
Bedroom 2: 14'1 x 8'1 (4.30m x 2.47m)

OUTSIDE

Allocated Parking
Rear Garden
Shed

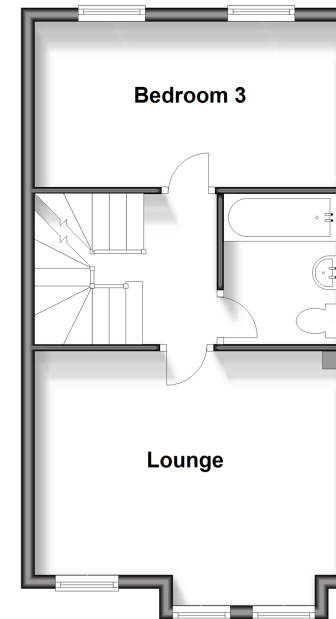
Ground Floor

Approx. 407.8 sq. feet



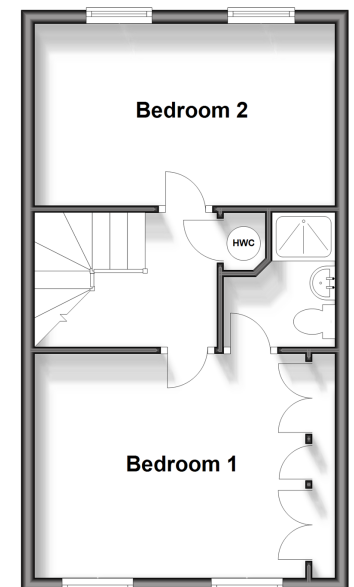
First Floor

Approx. 418.9 sq. feet



Second Floor

Approx. 395.0 sq. feet



Call Loose - 01622 744067 ■ wardsofkent.co.uk

- Legal advice should be taken to verify fixtures/fittings, planning, alterations and/or lease details
- Through a Homewise Home For Life Plan people aged 60+ can secure this property for up to 59% less, by purchasing a Lifetime Lease.

- Appliances & services are untested, dimensions are approximate and floor plans are not to scale



13021949/20240404/KIR/VMK