



Price
£385,000

Freehold

3x  1x  1x 

**Whitebeam Drive,
Coxheath, Maidstone,
Kent, ME17**

OVER 60?

Secure this property
for up to **59% less!**

Wards
Helping you move forwards



Main features

- A well presented family house
- Renovated throughout by the current owners
- Located in the popular village of Coxheath, short walk to local shops, primary school and amenities
- Beautifully landscaped garden, perfect for the summer months
- Underfloor heating in the lounge, hallway and dining area

Accommodation

GROUND FLOOR

Entrance Hall

Lounge: 13'9 x 10'9 (4.19m x 3.28m)

Dining Area: 10'3 x 8'8 (3.13m x 2.64m)

Kitchen: 16'7 x 6'10 (5.06m x 2.08m)

FIRST FLOOR

Landing

Bedroom 1: 11'9 x 9'6 (3.58m x 2.90m)

Bedroom 2: 9'1 x 5'5 (2.77m x 1.65m)

Bedroom 3: 8'9 x 7'6 (2.67m x 2.29m)

Bathroom: 7'5 x 5'4 (2.26m x 1.63m)

OUTSIDE

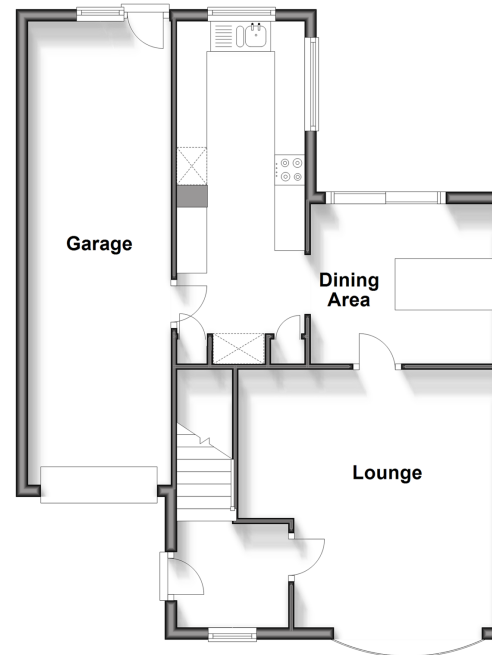
Garage: 25'8 x 7'9 (7.83m x 2.36m)

Driveway

Rear Garden

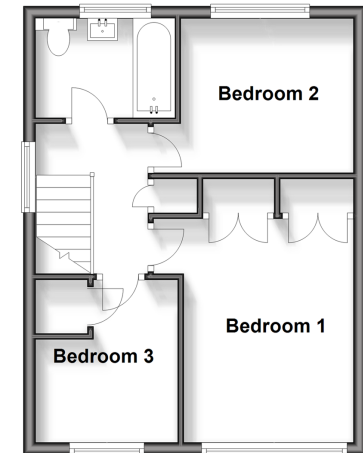
Ground Floor

Approx. 62.8 sq. metres (675.6 sq. feet)



First Floor

Approx. 37.2 sq. metres (400.1 sq. feet)



Call Loose - 01622 744067 ■ wardsofkent.co.uk

■ Legal advice should be taken to verify fixtures/fittings, planning, alterations and/or lease details
 ■ Through a Homewise Home For Life Plan people aged 60+ can secure this property for up to 59% less, by purchasing a Lifetime Lease.

■ Appliances & services are untested, dimensions are approximate and floor plans are not to scale



13021951/20240417/AS/AS