



**OVER 60?**

Secure this property  
for up to **59% less!**

**Price**

**£420,000**

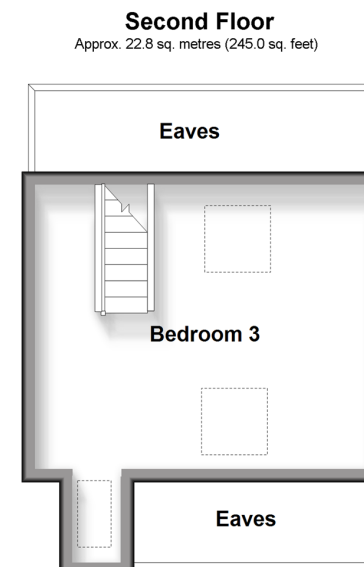
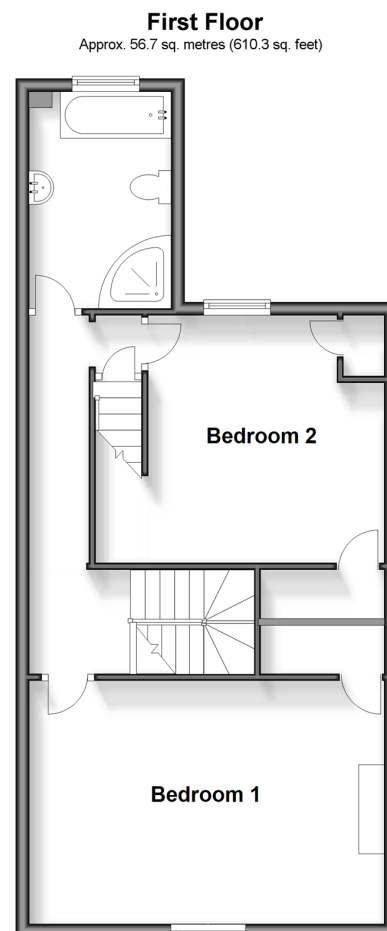
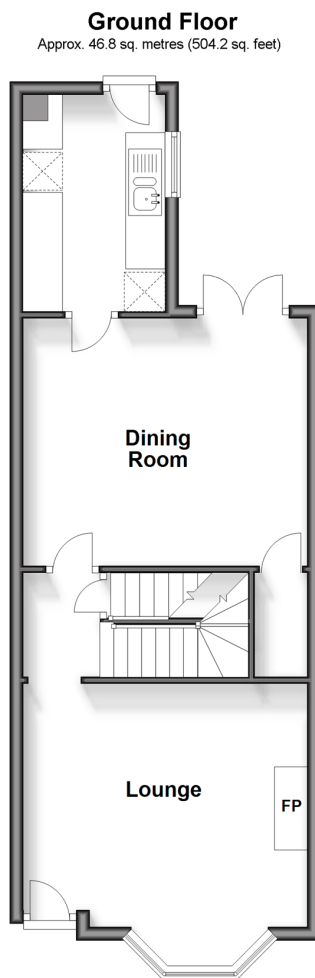
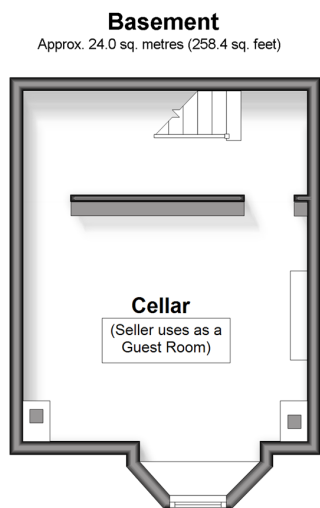
**Freehold**

3x  1x  2x 

**Hardy Street, Penenden  
Heath, Maidstone, Kent  
ME14**

**Wards**  
Helping you move forwards





## Accommodation

### GROUND FLOOR

Lounge: 14'3 x 12'3 (4.35m x 3.74m)  
Dining Room: 14'3 x 12'7 (4.35m x 3.84m)  
Kitchen: 11'0 x 7'1 (3.36m x 2.16m)

### BASEMENT

Cellar/Guest Room: 14'6 x 12'5 (4.42m x 3.79m)

### FIRST FLOOR

Landing  
Bedroom 1: 17'3 x 13'5 (5.26m x 4.09m)  
Bedroom 2: 17'6 x 12'3 (5.34m x 3.74m)  
Bathroom: 10'8 x 7'3 (3.25m x 2.21m)

### SECOND FLOOR

Landing  
Bedroom 3: 16'9 x 14'0 (5.11m x 4.27m)

### OUTSIDE

Rear Garden  
Front Garden



## Main features

- Unusually large Victorian house
- Easy access to the town centre with its rail and motorway links
- Useful cellar room providing versatile extra space
- Perfect location on a popular road
- Eye catching décor throughout showcasing a traditional and modern mix



### Nearest Schools

Primary Schools: North Borough Junior School 0.3 miles, East Borough Primary 0.7 miles, Sandling Primary 1.2 miles

Secondary Schools: Invicta Grammar School 0.9 miles



### Transport Information

Train Stations: Maidstone East 0.5 miles, Maidstone West 1.0 miles, Maidstone Barracks 1.4 miles



### Address

Hardy Street, Penenden Heath, Maidstone, Kent ME14



### Directions

For directions to this property please contact us.





**Wards**  
Helping you move forwards

Call Maidstone Branch 01622 683737 ■ [wardsofkent.co.uk](http://wardsofkent.co.uk)



■ Legal advice should be taken to verify fixtures/fittings, planning, alterations and/or lease details ■ Appliances & services are untested, dimensions are approximate and floor plans are not to scale  
■ Through a Homewise Home For Life Plan people aged 60+ can secure this property for up to 59% less, by purchasing a Lifetime Lease.



13137910/20240501/CV/LB01