



**Price**  
**£340,000**

**Freehold**

3x  1x  2x 

**West Park Road,  
Maidstone, Kent ME15**

**OVER 60?**

Secure this property  
for up to **59% less!**

*Wards*  
Helping you move forwards





## Main features

- Popular residential location
- Spacious rear garden and generous size accommodation
- Potential to extend or go into the loft (subject to planning permission)
- Positioned within easy reach of schools
- Close to Mote Park and the town centre

## Accommodation

### GROUND FLOOR

Entrance Porch  
Hallway  
Lounge: 13'11 x 12'1 (4.24m x 3.69m)  
Dining Area: 16'7 x 13'11 (5.06m x 4.24m)  
Conservatory: 9'1 x 7'4 (2.77m x 2.24m)  
Kitchen: 15'8 x 7'7 (4.78m x 2.31m)

### FIRST FLOOR

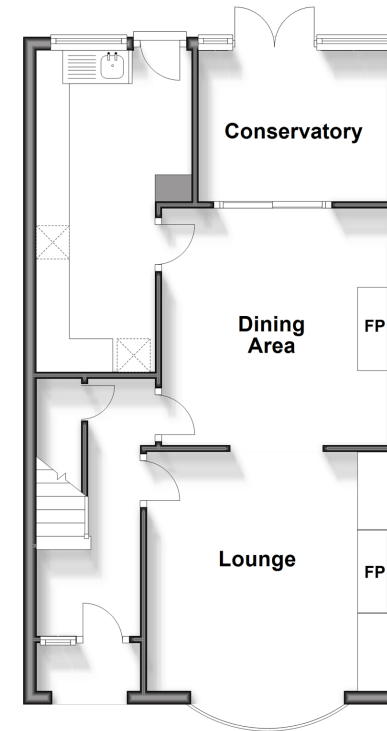
Landing  
Bedroom 1: 11'7 x 10'8 (3.53m x 3.25m)  
Bedroom 2: 13'11 x 11'4 (4.24m x 3.46m)  
Bedroom 3: 7'6 x 6'4 (2.29m x 1.93m)  
Bathroom

### OUTSIDE

Rear Garden  
Front Garden  
Off Road Parking

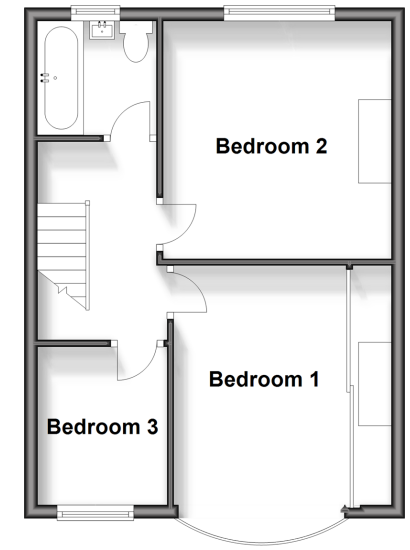
### Ground Floor

Approx. 51.0 sq. metres (549.5 sq. feet)



### First Floor

Approx. 39.3 sq. metres (422.5 sq. feet)



**Call Maidstone - 01622 683737 ■ [wardsofkent.co.uk](http://wardsofkent.co.uk)**

■ Legal advice should be taken to verify fixtures/fittings, planning, alterations and/or lease details  
■ Through a Homewise Home For Life Plan people aged 60+ can secure this property for up to 59% less, by purchasing a Lifetime Lease.

■ Appliances & services are untested, dimensions are approximate and floor plans are not to scale



13138370/20240427/CV/LB01