



OVER 60?

Secure this property
for up to **59% less!**

Price

£550,000

Freehold

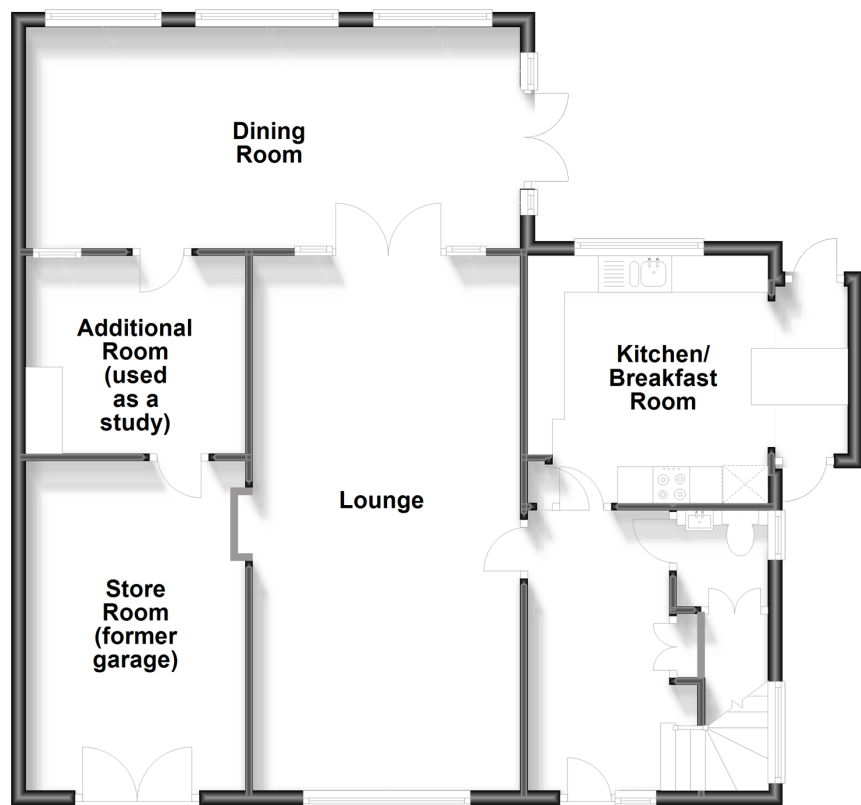
4x  3x  2x 

**Byron Road, Penenden
Heath, Maidstone, Kent
ME14**

Wards
Helping you move forwards

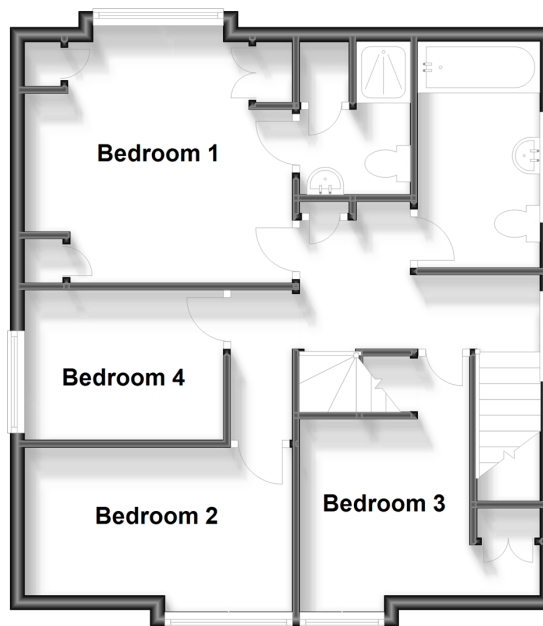
Ground Floor

Approx. 97.3 sq. metres (1047.5 sq. feet)



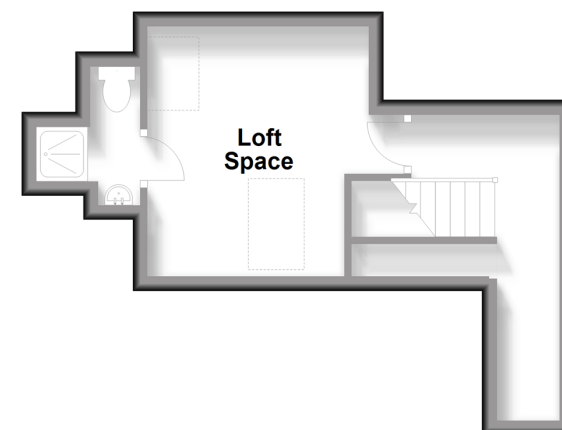
First Floor

Approx. 54.5 sq. metres (587.1 sq. feet)



Loft

Approx. 19.4 sq. metres (209.0 sq. feet)



Accommodation

GROUND FLOOR

Hallway
Cloakroom: 4'0 x 4'0 (1.22m x 1.22m)
Additional Room Used As Study: 9'0 x 9'0 (2.75m x 2.75m)
Store Room (Former Garage)
Lounge: 24'0 x 12'0 (7.32m x 3.66m)
Dining Room: 22'0 x 10'0 (6.71m x 3.05m)
Kitchen/Breakfast Room: 14'11 x 11'0 (4.55m x 3.36m)

FIRST FLOOR

Landing
Bedroom 1: 12'0 x 10'11 (3.66m x 3.33m)
En-Suite Shower Room: 6'0 x 4'11 (1.83m x 1.50m)
Bedroom 2: 12'0 x 6'11 (3.66m x 2.11m)
Bedroom 3: 12'0 x 10'11 (3.66m x 3.33m)
Bedroom 4: 8'0 x 7'0 up to fitted cupboard (2.44m x 2.14m)
Bathroom: 10'0 x 5'0 (3.05m x 1.53m)

SECOND FLOOR

Landing
Loft Space: 11'0 x 8'0 (3.36m x 2.44m)
Shower Room

OUTSIDE

Rear Garden
Front Garden
Garage: 15'0 x 9'0 (4.58m x 2.75m)



Main features

- Stunning condition family home in popular Penenden Heath area
- Generously proportioned throughout with additional loft/playroom
- Separate study/office to the ground floor
- Spacious rear garden and garage for storage
- Within easy reach of amenities



Nearest Schools

Primary Schools: Sandling Primary 0.4 miles, North Borough Junior School 0.6 miles, East Borough Primary 1.3 miles

Secondary Schools: Invicta Grammar School 1.5 miles,



Transport Information

Train Stations: Maidstone East 1.2 miles, Maidstone West 1.8 miles, Maidstone Barracks 2.1 miles



Address

Byron Road, Penenden Heath, Maidstone, Kent ME14



Directions

For directions to this property please contact us.



Call Maidstone Branch 01622 683737 ■ wardsofkent.co.uk



- Legal advice should be taken to verify fixtures/fittings, planning, alterations and/or lease details
- Appliances & services are untested, dimensions are approximate and floor plans are not to scale
- Through a Homewise Home For Life Plan people aged 60+ can secure this property for up to 59% less, by purchasing a Lifetime Lease.



13139263/20230912/CV/MC