



**OVER 60?**

Secure this property  
for up to **59% less!**

**Price**

**£185,000**

**Leasehold**

2x  1x  1x 

**Brewer Street,  
Maidstone, Kent ME14**

*Wards*  
Helping you move forwards





## Main features

- Character style split level maisonette
- Lovely condition throughout
- Vibrant town centre location
- Spacious rooms with lovely bay window in the lounge
- Shops, restaurants and stations just a short walk away

## Accommodation

### GROUND FLOOR

Entrance Hall

### SPLIT-LEVEL FIRST FLOOR

Landing

Lounge: 15'7 x 14'6 (4.75m x 4.42m)

Kitchen: 9'4 x 6'5 (2.85m x 1.96m)

Bedroom 2: 13'9 x 9'5 (4.19m x 2.87m)

Shower Room

### SECOND FLOOR

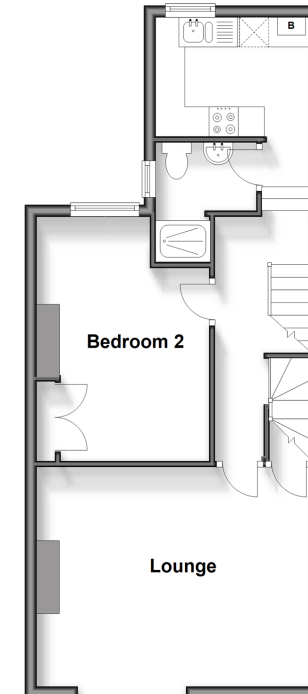
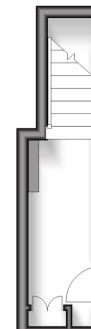
Landing

Bedroom 1: 15'8 x 14'4 (4.78m x 4.37m)

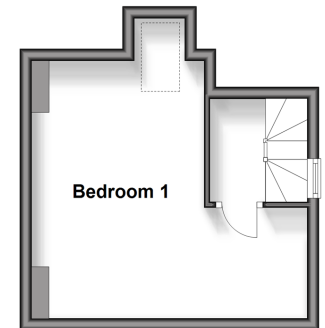
### Split Level First Floor

Approx. 47.1 sq. metres (506.9 sq. feet)

**Ground Floor**  
Approx. 5.0 sq. metres (53.7 sq. feet)



**Second Floor**  
Approx. 20.0 sq. metres (215.1 sq. feet)



**Call Maidstone - 01622 683737 ■ wardsofkent.co.uk**

■ Legal advice should be taken to verify fixtures/fittings, planning, alterations and/or lease details  
■ Through a Homewise Home For Life Plan people aged 60+ can secure this property for up to 59% less, by purchasing a Lifetime Lease.

■ Appliances & services are untested, dimensions are approximate and floor plans are not to scale



13143891/20240404/CA/MB