



OVER 60?

Secure this property
for up to **59% less!**

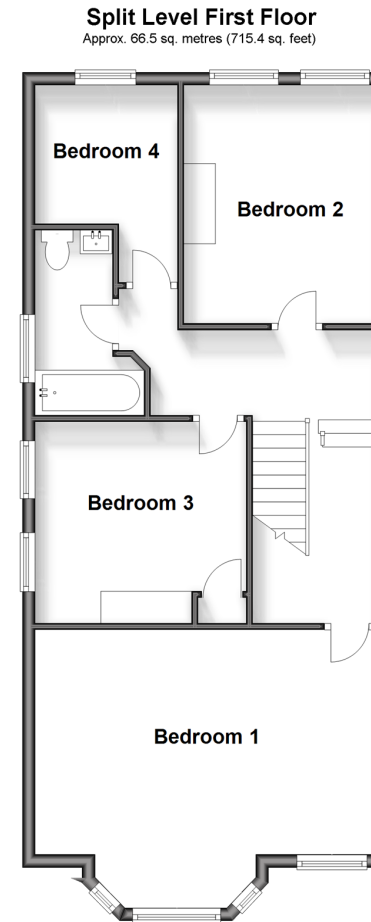
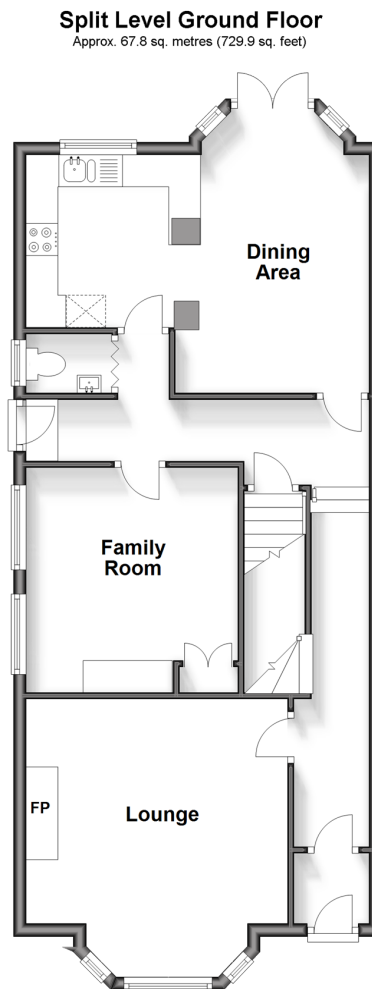
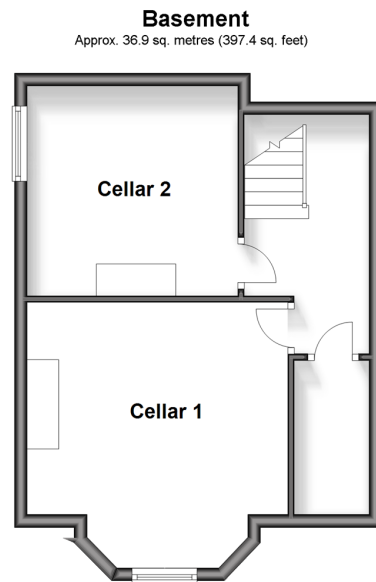
Price
£450,000

Freehold

4x  1x  2x 

**Florence Road,
Maidstone, Kent, ME16**

Wards
Helping you move forwards



Accommodation

SPLIT-LEVEL GROUND FLOOR

Entrance Porch
Hallway
Lounge: 14'3 x 13'4 (4.35m x 4.07m)
Family Room: 10'9 x 8'8 (3.28m x 2.64m)
Cloakroom
Dining Area: 12'2 x 9'8 (3.71m x 2.95m)
Kitchen: 8'1 x 7'5 (2.47m x 2.26m)

BASEMENT

Inner Hallway: 13'1 x 6'5 (3.99m x 1.96m)
Cellar 1: 13'8 x 13'2 (4.17m x 4.02m)
Cellar 2: 10'7 x 9'7 (3.23m x 2.92m)

SPLIT-LEVEL FIRST FLOOR

Landing
Bedroom 1: 17'8 (5.39m) x 14'4 (4.37m) narrowing to 11'3 (3.43m)
Bedroom 2: 12'6 x 9'9 (3.81m x 2.97m)
Bedroom 3: 10'9 x 10'3 (3.28m x 3.13m)
Bedroom 4: 7'4 x 7'3 (2.24m x 2.21m)
Bathroom

OUTSIDE

Rear Garden
Front Garden



Main features

- Beautiful Victorian family house arranged over 3 floors
- Easy access to the town centre, rail station and local amenities
- Twin chamber basement, ripe for conversion (subject to planning consents)
- Boasting a wealth of accommodation and character features throughout
- Large rear garden



Nearest Schools

Primary Schools: Maidstone, St Michael's C of E Junior School 0.2 miles, Brunswick House Primary 0.9 miles, East Borough Primary 1.0 miles - Secondary Schools: St Augustine Academy 1.0 miles, St Simon Stock Catholic School 1.0 miles, Oakwood Park Grammar 1.1 miles



Transport Information

Train Stations: Maidstone West 0.5 miles, Maidstone Barracks 1.0 miles, Maidstone East 1.1 miles



Address

Florence Road, Maidstone, Kent, ME16



Directions

For directions to this property please contact us.



Wards
Helping you move forwards

Call Maidstone Branch 01622 683737 ■ wardsofkent.co.uk



■ Legal advice should be taken to verify fixtures/fittings, planning, alterations and/or lease details ■ Appliances & services are untested, dimensions are approximate and floor plans are not to scale
■ Through a Homewise Home For Life Plan people aged 60+ can secure this property for up to 59% less, by purchasing a Lifetime Lease.



13145495/20240407/CV/DS