



OVER 60?

Secure this property
for up to **59% less!**

Price

£275,000

Freehold

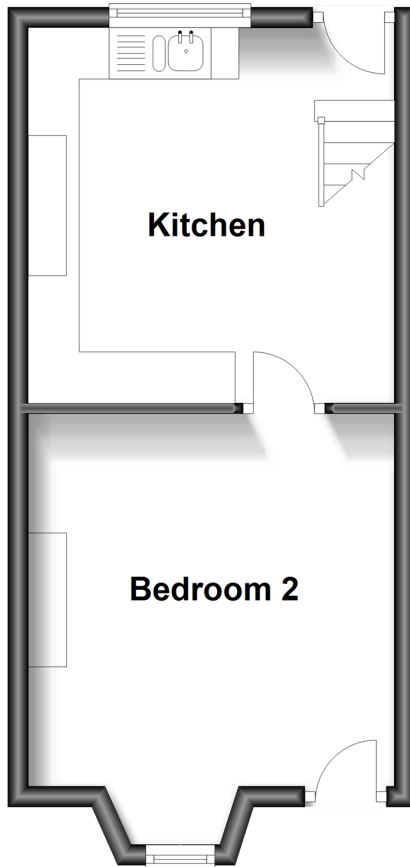
2x  1x  2x 

**Hardy Street, Maidstone,
Kent ME14**

Wards
Helping you move forwards

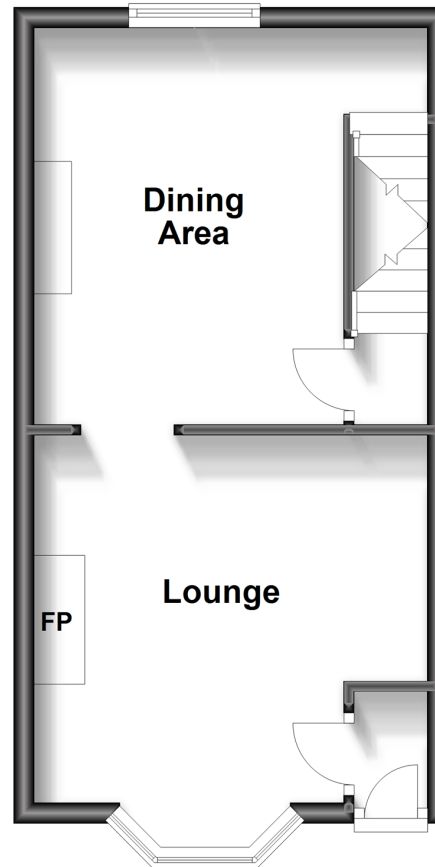
Lower Ground Floor

Approx. 27.1 sq. metres (291.6 sq. feet)



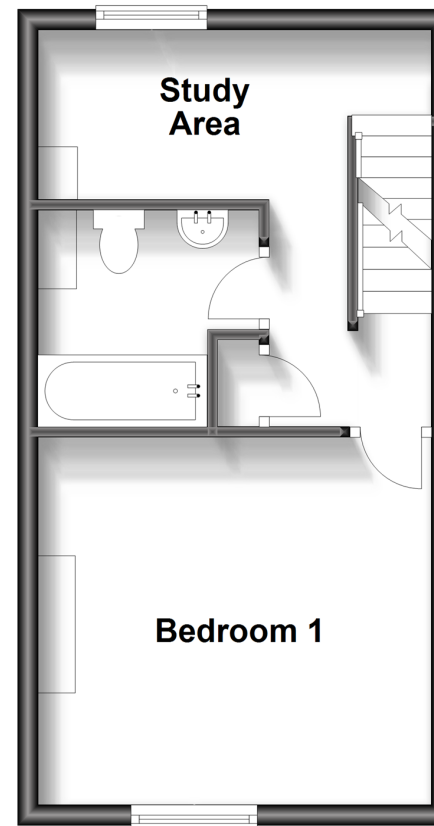
Ground Floor

Approx. 29.3 sq. metres (314.9 sq. feet)



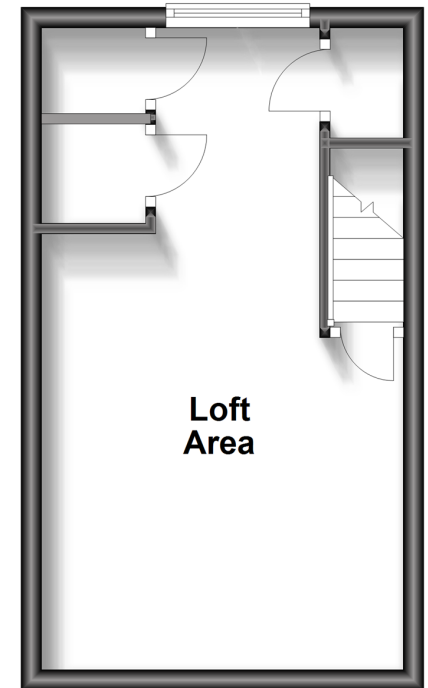
First Floor

Approx. 29.1 sq. metres (312.9 sq. feet)



Loft

Approx. 22.2 sq. metres (238.4 sq. feet)



Accommodation

LOWER GROUND FLOOR

Bedroom 2/ Reception Room: 13'0 x 12'0 (3.97m x 3.66m)

Kitchen: 12'0 x 12'0 (3.66m x 3.66m)

GROUND FLOOR

Hallway

Lounge: 13'10 x 13'1 (4.22m x 3.99m)

Dining Area: 12'0 x 9'0 (3.66m x 2.75m)

FIRST FLOOR

Landing

Bedroom 1: 13'1 x 11'0 (3.99m x 3.36m)

Study Area: 6'0 x 5'0 (1.83m x 1.53m)

Bathroom

LOFT

Landing

Loft Room: 20'0 x 11'0 (6.10m x 3.36m)

OUTSIDE

Rear Garden

Small Front Garden



Main features

- A fabulous Victorian home arranged over 4 floors
- Offered in good condition whilst still with potential to put your own personal stamp on
- Modern kitchen and bathroom
- Brilliant loft room and additional study area creating further versatile accommodation
- Excellent location just a short walk from Maidstone East and the town centre but also with easy access to the M2 and M20 motorways



Nearest Schools

Primary Schools: North Borough Junior School 0.2 miles, East Borough Primary 0.8 miles, Sandling Primary 1.2 miles

Secondary Schools: Invicta Grammar School 0.9 miles



Transport Information

Train Stations: Maidstone East 0.5 miles, Maidstone West 1.1 miles, Maidstone Barracks 1.5 miles



Address

Hardy Street, Maidstone, Kent ME14



Directions

For directions to this property please contact us.



Wards
Helping you move forwards

Call Maidstone Branch 01622 683737 ■ wardsofkent.co.uk



- Legal advice should be taken to verify fixtures/fittings, planning, alterations and/or lease details
- Appliances & services are untested, dimensions are approximate and floor plans are not to scale
- Through a Homewise Home For Life Plan people aged 60+ can secure this property for up to 59% less, by purchasing a Lifetime Lease.



13145520/20230821/SS1/HS1