



Price
£335,000

Freehold

3x  1x  2x 

**Wallis Avenue,
Maidstone, Kent ME15**

OVER 60?

Secure this property
for up to **59% less!**

Wards
Helping you move forwards



Main features

- Impressive large summer house to the rear
- Downstairs toilet and utility room
- Open plan lounge/dining room
- Immaculate order throughout, recent updates made
- Convenient location for schools and shops

Accommodation

GROUND FLOOR

Hallway

Lounge : 13'5 x 13'1 (4.09m x 3.99m)

Dining Room: 11'6 x 10'0 (3.51m x 3.05m)

Kitchen: 14'4 x 9'9 (4.37m x 2.97m)

Utility Room

Separate Toilet

FIRST FLOOR

Landing

Bedroom 1: 13'7 x 12'4 (4.14m x 3.76m)

Bedroom 2: 11'6 x 10'9 (3.51m x 3.28m)

Bedroom 3: 9'0 x 9'0 (2.75m x 2.75m)

Bathroom

OUTBUILDING

Summer House/Workshop

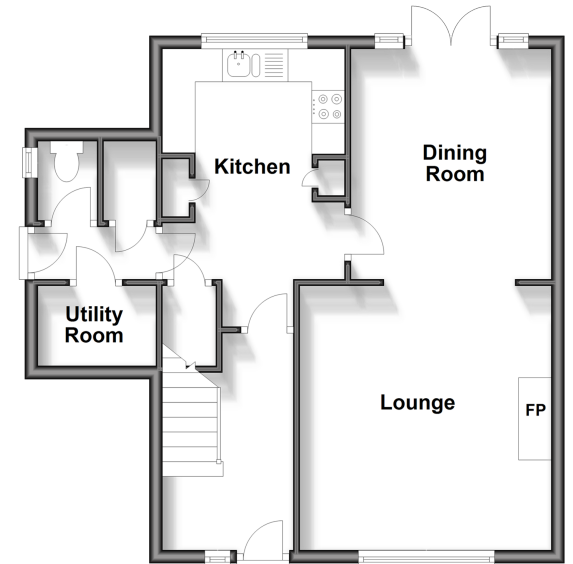
OUTSIDE

Rear Garden

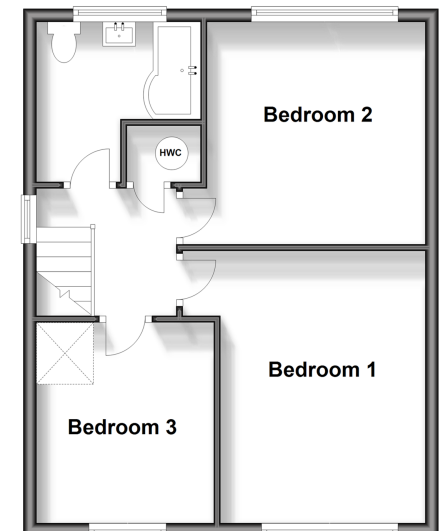
Front Garden

Driveway

Ground Floor
Approx. 51.7 sq. metres (556.5 sq. feet)



First Floor
Approx. 45.2 sq. metres (486.6 sq. feet)



Call Maidstone - 01622 683737 ■ wardsofkent.co.uk

- Legal advice should be taken to verify fixtures/fittings, planning, alterations and/or lease details
- Appliances & services are untested, dimensions are approximate and floor plans are not to scale
- Through a Homewise Home For Life Plan people aged 60+ can secure this property for up to 59% less, by purchasing a Lifetime Lease.



13149159/20240420/CV/LB01