



**Price**

**£200,000**

**Leasehold**

2x  1x  1x 

**The Chenies, Maidstone,  
Kent ME15**

**OVER 60?**

Secure this property  
for up to **59% less!**

*Wards*  
Helping you move forwards





## Main features

- Beautifully presented ground floor apartment
- Located in a quiet development just outside of the town centre
- Open plan lounge/kitchen/dining area with balcony access
- Allocated parking space for 1 vehicle
- Fantastic, central location just a short walk to the town centre

## Accommodation

### GROUND FLOOR

#### Entrance Hall

Lounge Area: 13'0 x 12'0 (3.97m x 3.66m)

Kitchen/Dining Area: 16'0 x 6'0 (4.88m x 1.83m)

#### Balcony

Bedroom 1: 9'6 x 8'0 up to fitted wardrobes (2.90m x 2.44m)

#### En-Suite Shower

Bedroom 2: 8'10 x 8'0 up to fitted wardrobes (2.69m x 2.44m)

#### Bathroom

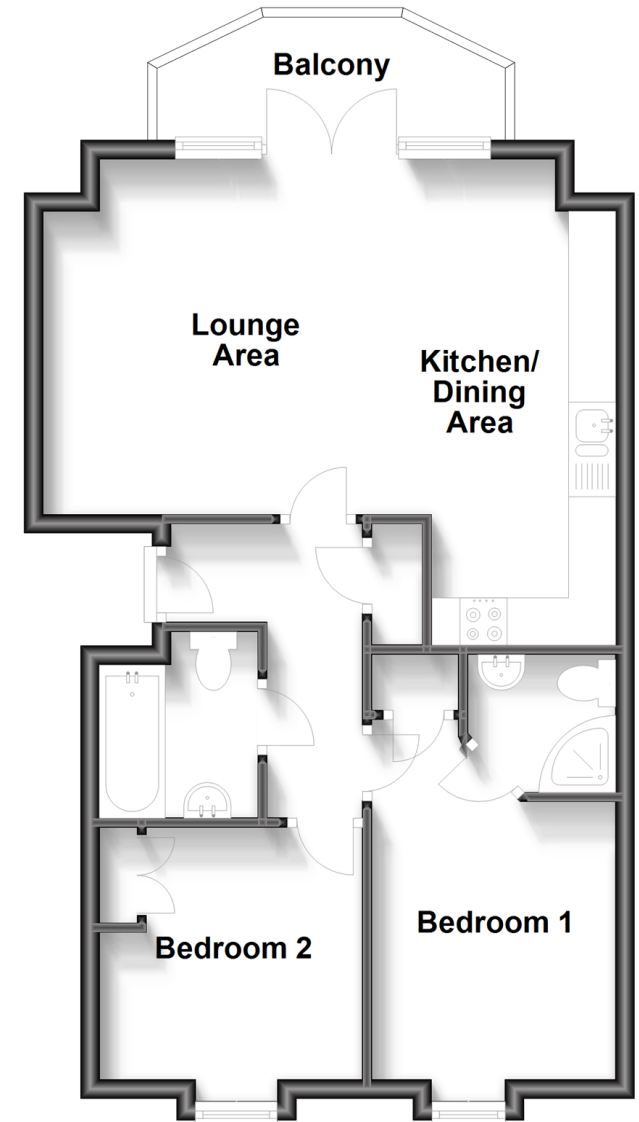
### OUTSIDE

#### Communal Gardens

#### Allocated Parking

## Ground Floor

Approx. 54.1 sq. metres (581.8 sq. feet)



**Call Maidstone - 01622 683737 ■ [wardsofkent.co.uk](http://wardsofkent.co.uk)**

- Legal advice should be taken to verify fixtures/fittings, planning, alterations and/or lease details
- Appliances & services are untested, dimensions are approximate and floor plans are not to scale
- Through a Homewise Home For Life Plan people aged 60+ can secure this property for up to 59% less, by purchasing a Lifetime Lease.



13149998/20231028/CV/HS1