



**Price**  
**£240,000**

**Freehold**

2x  1x  1x 

**Woollett Street,  
Maidstone, Kent ME14**

**OVER 60?**

Secure this property  
for up to **59% less!**

*Wards*  
Helping you move forwards

Awaiting  
photo

Awaiting  
photo

Awaiting  
photo

## Main features

- Unique Victorian era house
- Large single storey extension to the rear in lieu of a garden
- Useful loft room accessed from a fixed staircase
- Very well presented throughout
- Town centre location, ideal for amenities

## Accommodation

### SPLIT-LEVEL GROUND FLOOR

Shower Room

Kitchen: 11'1 x 10'7 (3.38m x 3.23m)

Lounge/Dining Area: 31'1 x 10'6  
(9.48m x 3.20m)

### FIRST FLOOR

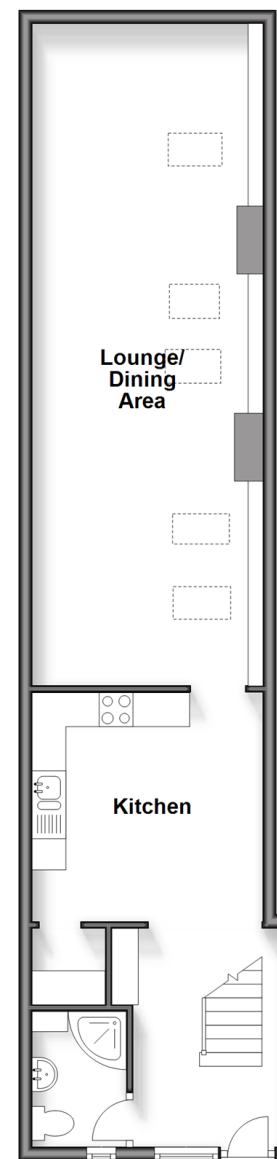
Landing

Bedroom 1: 10'0 x 7'4 (3.05m x 2.24m)

Bedroom 2: 11'0 x 8'0 (3.36m x 2.44m)

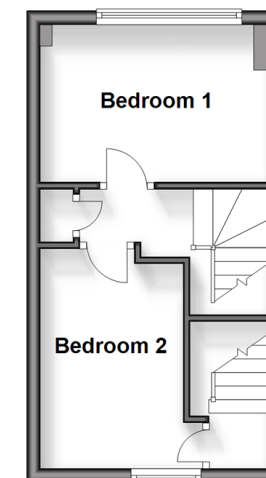
### Split Level Ground Floor

Approx. 57.6 sq. metres (619.7 sq. feet)



### First Floor

Approx. 22.4 sq. metres (241.0 sq. feet)



Call Maidstone - 01622 683737 ■ [wardsofkent.co.uk](http://wardsofkent.co.uk)

- If buying to let, the energy rating will need to be improved to at least 'E' rating before you can let the property
- Legal advice should be taken to verify fixtures/fittings, planning, alterations and/or lease details
- Appliances & services are untested, dimensions are approximate and floor plans are not to scale
- Through a Homewise Home For Life Plan people aged 60+ can secure this property for up to 59% less, by purchasing a Lifetime Lease.



13150195/20240427/CV/MB