



OVER 60?

Secure this property
for up to **59% less!**

Guide Price
£550,000
Leasehold

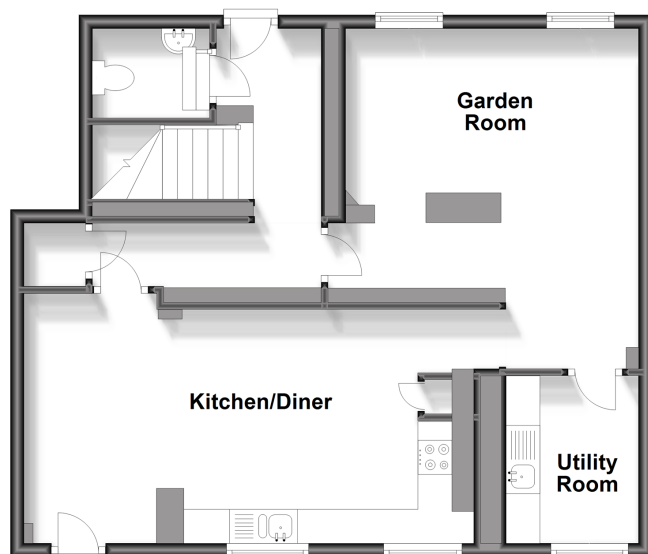
4x  3x  2x 

St. Andrew's Park, Tarragon Road,
Maidstone, Kent ME16

Wards
Helping you move forwards

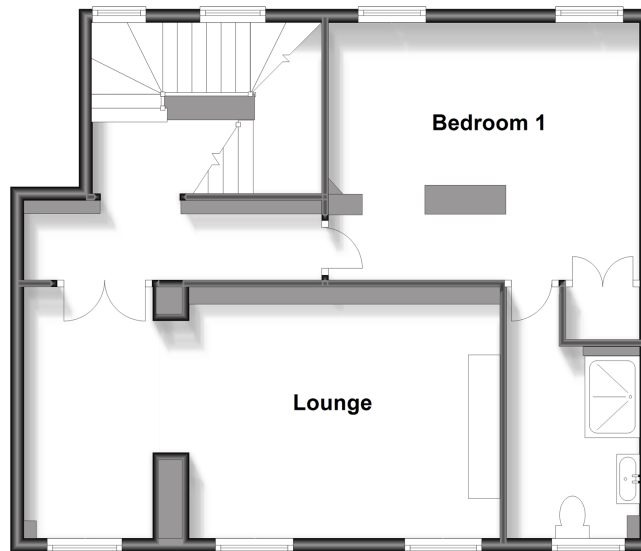
Ground Floor

Approx. 64.0 sq. metres (688.4 sq. feet)



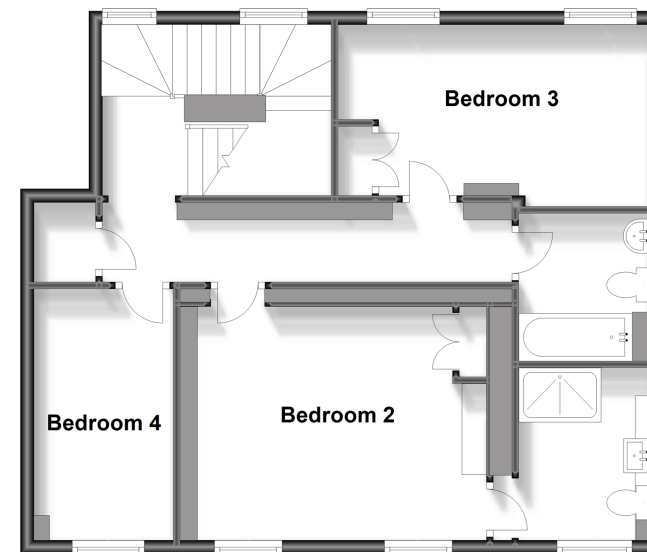
First Floor

Approx. 65.4 sq. metres (704.0 sq. feet)



Second Floor

Approx. 67.0 sq. metres (721.2 sq. feet)



Accommodation

GROUND FLOOR

Hallway: 13'1 x 11'6 (3.99m x 3.51m)

Cloakroom

Garden Room: 14'2 x 12'10 (4.32m x 3.91m)

Kitchen/Diner: 20'7 x 12'0 (6.28m x 3.66m)

Utility Room: 8'1 x 6'5 (2.47m x 1.96m)

FIRST FLOOR

Landing

Lounge: 21'9 x 11'2 (6.63m x 3.41m)

Bedroom 1: 14'2 x 13'1 (4.32m x 3.99m)

En-Suite Shower Room: 9'1 x 6'6 (2.77m x 1.98m)

SECOND FLOOR

Landing

Bedroom 2: 13'0 x 11'7 (3.97m x 3.53m)

En-Suite Shower Room: 8'4 x 6'4 (2.54m x 1.93m)

Bedroom 3: 14'1 x 9'3 (4.30m x 2.82m)

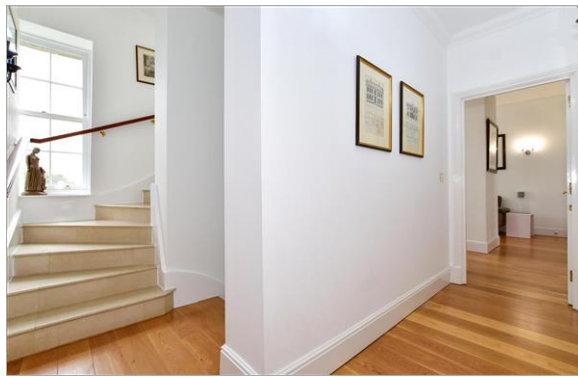
Bedroom 4: 12'7 x 6'8 (3.84m x 2.03m)

Bathroom: 7'10 x 6'4 (2.39m x 1.93m)

OUTSIDE

Patio Area

Communal Grounds



Main features

- A stunning Grade II listed town house totalling 2,114 sq ft
- Beautiful grounds and views surrounding the complex
- En-suite facilities to 2 bedrooms as well as a bathroom and downstairs cloakroom
- Ample residents and visitor parking
- Individual character includes vaulted ceilings, solid stone walls and feature sash windows



Nearest Schools

Primary Schools: West Borough Primary 0.4 miles, St Francis' Catholic Primary, Maidstone 0.7 miles, Barming Primary 1.0 miles

Secondary Schools: Bower Grove School 0.3 miles



Transport Information

Train Stations: East Farleigh 0.7 miles, Maidstone Barracks 1.6 miles, Maidstone East 1.7 miles, Maidstone West 1.9 miles, Barming Station 2.1 miles.



Address

St. Andrew's Park, Tarragon Road, Maidstone, Kent ME16



Directions

For directions to this property please contact us.



Call Maidstone Branch 01622 683737 ■ wardsofkent.co.uk



- Legal advice should be taken to verify fixtures/fittings, planning, alterations and/or lease details
- Appliances & services are untested, dimensions are approximate and floor plans are not to scale
- Through a Homewise Home For Life Plan people aged 60+ can secure this property for up to 59% less, by purchasing a Lifetime Lease.



13152204/20240321/KW5/DS