

OVER 60?

Secure this property
for up to **59% less!**



Price

£350,000

Freehold

4x  1x  1x 

Forest Hill, Maidstone, Kent ME15

Wards
Helping you move forwards



Main features

- **Fabulous, extended family house on a popular residential road**
- **Open plan living/kitchen/garden room**
- **Sunny rear garden**
- **Driveway and large garage with space for a workshop at rear**
- **Brilliant location just a short distance from the town centre**

Accommodation

GROUND FLOOR

Entrance Porch
Entrance Hall
Lounge: 14'0 x 12'0 (4.27m x 3.66m)
Bedroom 4: 11'10 x 9'0 (3.61m x 2.75m)
Kitchen/Dining Area: 15'0 x 10'0 (4.58m x 3.05m)
Garden Room: 13'0 x 9'0 (3.97m x 2.75m)

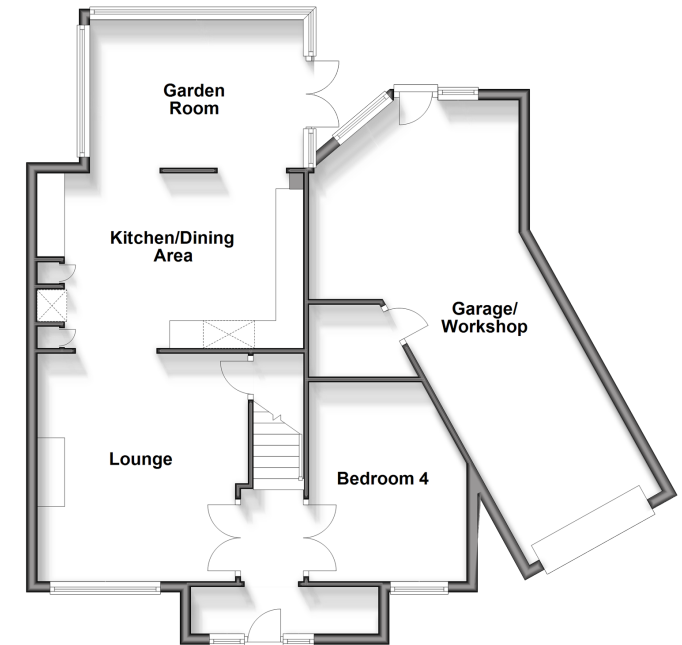
FIRST FLOOR

Landing
Bedroom 1: 12'0 x 9'0 up to fitted wardrobes (3.66m x 2.75m)
Bedroom 2: 9'0 x 9'0 (2.75m x 2.75m)
Bedroom 3: 10'0 x 6'0 up to fitted wardrobes (3.05m x 1.83m)
Shower Room

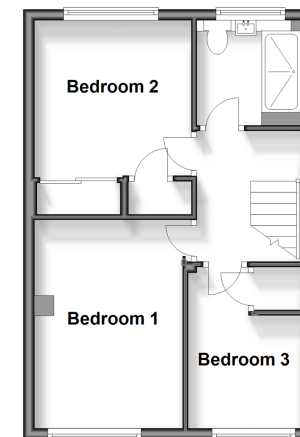
OUTSIDE

Rear Garden
Front Garden
Driveway
Garage/Workshop: 27'0 x 9'0 (8.24m x 2.75m)

Ground Floor
Approx. 88.5 sq. metres (953.0 sq. feet)



First Floor
Approx. 36.0 sq. metres (387.0 sq. feet)



Call Maidstone - 01622 683737 ■ wardsofkent.co.uk

- Legal advice should be taken to verify fixtures/fittings, planning, alterations and/or lease details
- Appliances & services are untested, dimensions are approximate and floor plans are not to scale
- Through a Homewise Home For Life Plan people aged 60+ can secure this property for up to 59% less, by purchasing a Lifetime Lease.



13152760/20240302/CV/DS