



Price
£375,000

Freehold

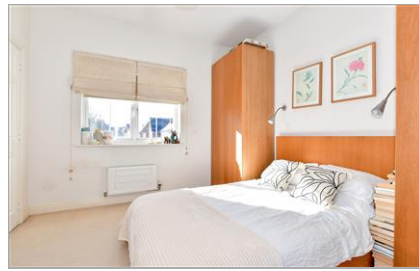
3x  2x  1x 

**Cinnamon Grove,
Maidstone, Kent ME16**

OVER 60?

Secure this property
for up to **59% less!**

Wards
Helping you move forwards



Main features

- Modern family home
- Close proximity to Maidstone Hospital
- En-suite facilities to bedroom 1
- Popular cul-de-sac location
- Open plan lounge
- Driveway to front (garage converted to storage)

Accommodation

GROUND FLOOR

Entrance Hall
Storage (Former Garage)
Cloakroom
Kitchen: 11'5 x 5'6 (3.48m x 1.68m)
Lounge: 16'3 x 12'7 (4.96m x 3.84m)
Dining Area: 11'2 x 9'0 (3.41m x 2.75m)

FIRST FLOOR

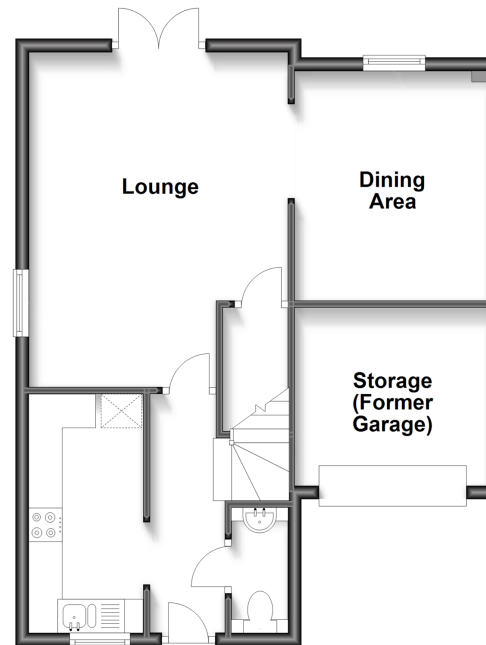
Landing
Bedroom 1: 10'6 x 10'5 (3.20m x 3.18m)
En-Suite Shower Room
Bedroom 2: 13'0 x 9'5 (3.97m x 2.87m)
Bedroom 3: 10'0 x 9'0 (3.05m x 2.75m)
Bathroom

OUTSIDE

Rear Garden
Front Garden
Driveway

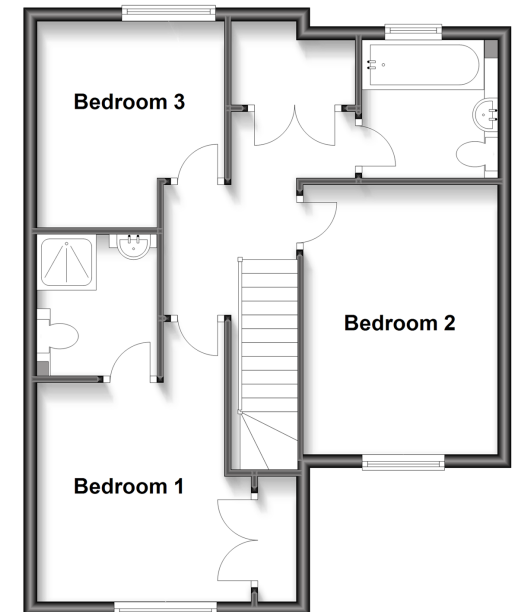
Ground Floor

Approx. 51.3 sq. metres (552.7 sq. feet)



First Floor

Approx. 51.9 sq. metres (558.1 sq. feet)



Call Maidstone - 01622 683737 ■ wardsofkent.co.uk

■ Legal advice should be taken to verify fixtures/fittings, planning, alterations and/or lease details
■ Through a Homewise Home For Life Plan people aged 60+ can secure this property for up to 59% less, by purchasing a Lifetime Lease.

■ Appliances & services are untested, dimensions are approximate and floor plans are not to scale



13153162/20240405/SS1/DS