



**OVER 60?**

Secure this property  
for up to **59% less!**

**Price**  
**£225,000**

**Freehold**

2x  1x  1x 

**St. Anne's Court,  
Maidstone, Kent ME16**

*Wards*  
Helping you move forwards



## Main features

- Over 55's complex within easy walking distance to the town centre
- Set within a modern cul-de-sac
- Spacious lounge with sun room
- Double glazing and Economy 7 heating
- Private rear garden, ideal for those with green fingers

## Accommodation

### GROUND FLOOR

Entrance Hall  
Cloakroom  
Kitchen: 8'2 x 7'2 (2.49m x 2.19m)  
Lounge: 18'3 (5.57m) x 15'2 (4.63m) narrowing to 11'8 (3.56m)  
Sun Room: 6'8 x 5'4 (2.03m x 1.63m)

### FIRST FLOOR

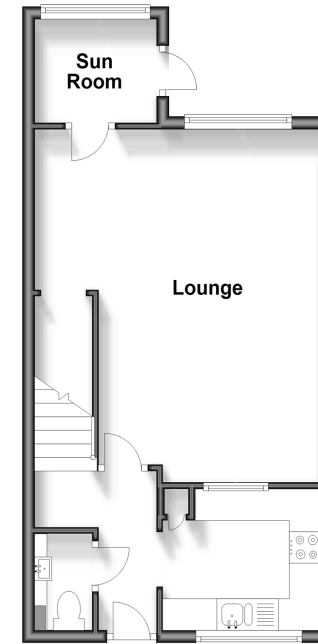
Landing  
Bedroom 1: 15'2 (4.63m) narrowing to 8'5 (2.57m) x 10'0 (3.05m)  
Bedroom 2: 13'5 x 8'5 (4.09m x 2.57m)  
Bathroom

### OUTSIDE

Rear Garden

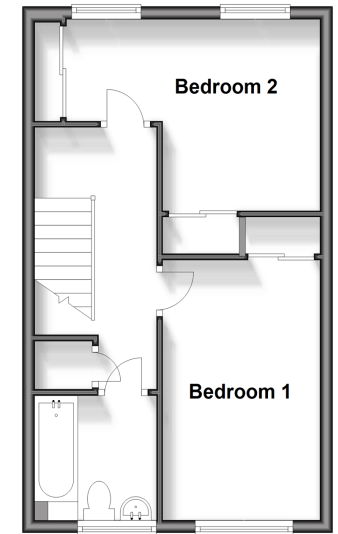
### Ground Floor

Approx. 40.4 sq. metres (435.0 sq. feet)



### First Floor

Approx. 36.7 sq. metres (394.6 sq. feet)



**Call Maidstone - 01622 683737 ■ [wardsofkent.co.uk](http://wardsofkent.co.uk)**

■ Legal advice should be taken to verify fixtures/fittings, planning, alterations and/or lease details  
■ Through a Homewise Home For Life Plan people aged 60+ can secure this property for up to 59% less, by purchasing a Lifetime Lease.

■ Appliances & services are untested, dimensions are approximate and floor plans are not to scale



13153313/20240328/CV/DS