



OVER 60?

You could get up to
59% off the price!*



Video Tour available

Price

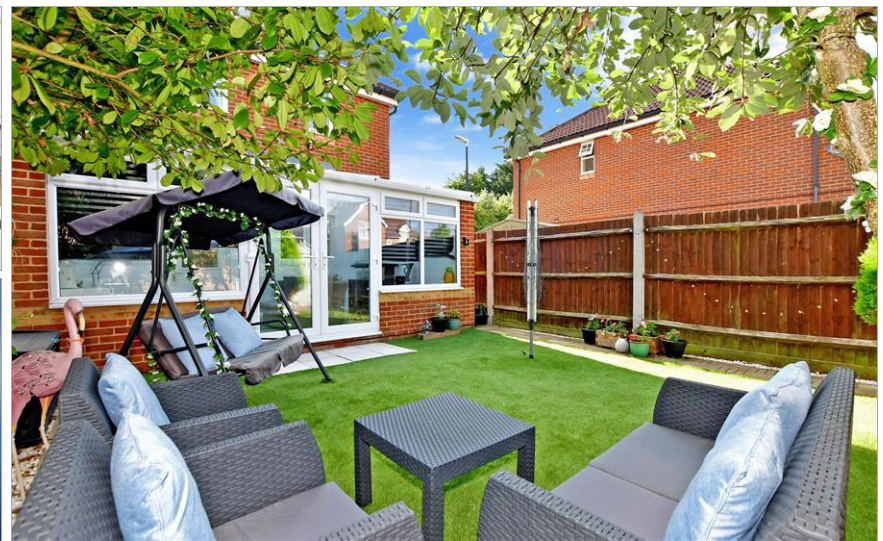
£360,000

Freehold

3x  1x  2x 

**Lacock Gardens,
Maidstone, Kent ME15**

Wards
Helping you move forwards



Main features

- Extended family home presented in good condition and updated throughout
- Open plan kitchen/ diner leading to a sizeable sun room
- Stunning views to the front of the property over South Park
- Benefitting from 2 allocated parking spaces and plenty of visitor's parking
- Located with easy access to local schools (including Loose Primary), parks, shops & just a short walk from the town centre

Accommodation

GROUND FLOOR

Hallway
Cloakroom
Lounge: 14'7 x 14'4 (4.45m x 4.37m)
Kitchen/Diner: 17'7 x 10'9 (5.36m x 3.28m)
Conservatory

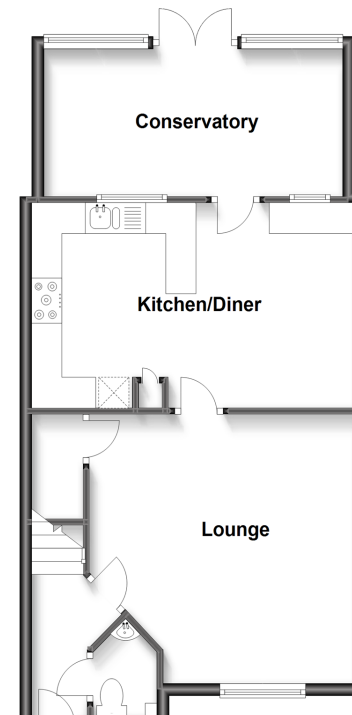
FIRST FLOOR

Landing
Bedroom 1: 13'9 x 8'11 (4.19m x 2.72m)
Bedroom 2: 10'8 x 10'0 (3.25m x 3.05m)
Bedroom 3: 8'11 x 8'5 (2.72m x 2.57m)
Bathroom

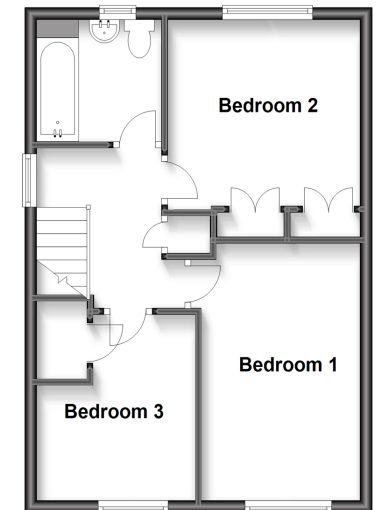
OUTSIDE

Rear Garden
Front Garden
2 Allocated Parking Spaces

Ground Floor
 Approx. 55.3 sq. metres (595.2 sq. feet)



First Floor
 Approx. 41.8 sq. metres (450.4 sq. feet)



Call Maidstone - 01622 683737 ■ wardsofkent.co.uk

- Legal advice should be taken to verify fixtures/fittings, planning, alterations and/or lease details
- Our Homewise partnership offer a 'Home for Life' plan to buyers over 60, granting a lifetime lease for your protection and reducing the purchase price by up to 59%

- Appliances & services are untested, dimensions are approximate and floor plans are not to scale



13153807/20220810/CV/HS1