



Price
£400,000

Freehold

3x  2x  2x 

**Loose Road, Maidstone,
Kent ME15**

OVER 60?

You could get up to
59% off the price!*

Wards
Helping you move forwards



Main features

- Fabulous, versatile home with large plot
- Huge driveway with parking for multiple cars
- Large main bedroom with Juliet balcony looking over the rear garden
- Copious amounts of living space
- Brilliant location, just a short drive from the town centre

Accommodation

GROUND FLOOR

Hallway

Living Room : 15'3 x 10'9 (4.65m x 3.28m)

Bedroom 2: 11'9 x 11'8 (3.58m x 3.56m)

Bathroom

Dining Room: 8'7 x 8'6 (2.62m x 2.59m)

Lounge: 21'2 (6.46m) x 11'9 (3.58m) narrowing to 8'8 (2.64m)

Kitchen: 10'9 x 8'7 (3.28m x 2.62m)

Utility Room : 7'7 x 3'1 (2.31m x 0.94m)

FIRST FLOOR

Landing

Bedroom 1: 16'2 x 12'9 (4.93m x 3.89m)

Juliet Balcony

Bedroom 3: 7'9 x 7'8 (2.36m x 2.34m)

Shower Room

OUTSIDE

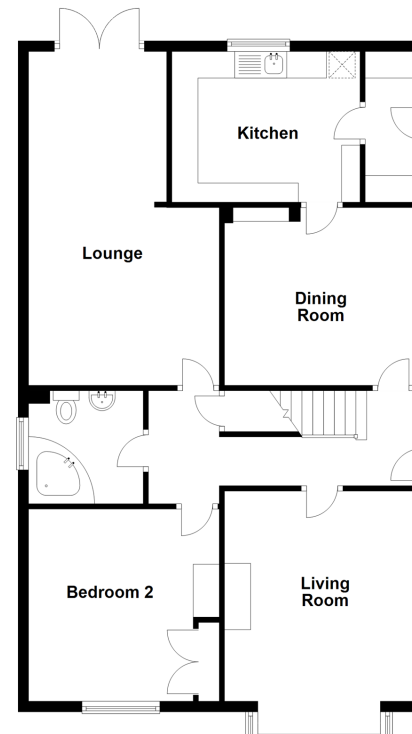
Rear Garden

Front Garden

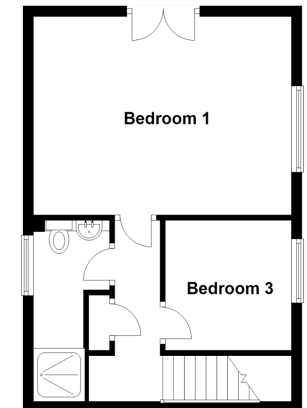
Off Road Parking

Garage

Ground Floor
Approx. 92.0 sq. metres (990.2 sq. feet)



First Floor
Approx. 35.5 sq. metres (381.7 sq. feet)



Call Maidstone - 01622 683737 ■ wardsofkent.co.uk

- Legal advice should be taken to verify fixtures/fittings, planning, alterations and/or lease details
- Our Homewise partnership offer a 'Home for Life' plan to buyers over 60, granting a lifetime lease for your protection and reducing the purchase price by up to 59%

- Appliances & services are untested, dimensions are approximate and floor plans are not to scale



13154149/20220616/CV/HS1