



OVER 60?

Secure this property
for up to **59% less!**

Price
£325,000

Freehold

4x  1x  2x 

**Holland Road,
Maidstone, Kent ME14**

Wards
Helping you move forwards

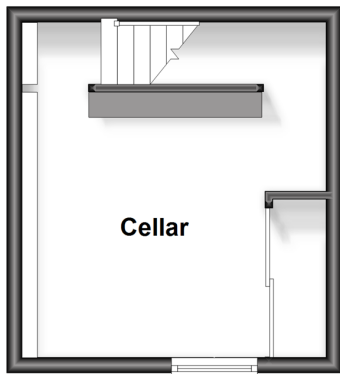
Ground Floor

Approx. 41.0 sq. metres (441.5 sq. feet)



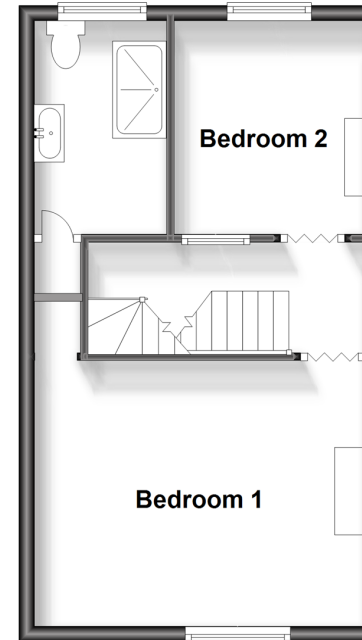
Basement

Approx. 17.1 sq. metres (184.6 sq. feet)



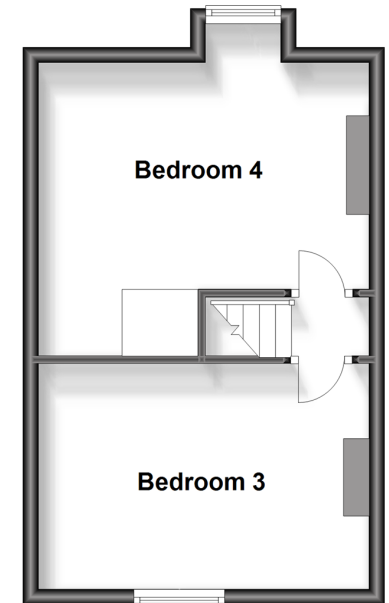
First Floor

Approx. 34.0 sq. metres (366.1 sq. feet)



Second Floor

Approx. 29.8 sq. metres (320.7 sq. feet)



Accommodation

GROUND FLOOR

Hallway

Lounge: 13'8 x 10'8 (4.17m x 3.25m)

Dining Room: 14'1 x 11'0 (4.30m x 3.36m)

Kitchen: 9'8 x 8'1 (2.95m x 2.47m)

BASEMENT

Cellar: 13'0 x 9'6 (3.97m x 2.90m)

FIRST FLOOR

Landing

Bedroom 1: 14'2 x 11'3 (4.32m x 3.43m)

Bedroom 2: 9'2 x 8'7 (2.80m x 2.62m)

Shower Room: 9'0 x 5'3 (2.75m x 1.60m)

SECOND FLOOR

Landing

Bedroom 3: 14'1 x 9'3 (4.30m x 2.82m)

Bedroom 4: 15'0 x 14'2 (4.58m x 4.32m)

OUTSIDE

Rear Garden

Front Garden



Main features

- Attractive period style house arranged over 4 floors
- Generous sized bedrooms
- Useful room in the basement
- Excellent location in the town, a short walk from the station, shops and schools
- Sunny aspect rear garden



Nearest Schools

Primary Schools: East Borough Primary 0.3 miles, North Borough Junior School 0.7 miles, Archbishop Courtenay Primary 1.3 miles

Secondary Schools: Invicta Grammar School 0.5 miles

Transport Information

Train Stations: Maidstone East 0.3 miles, Maidstone Barracks 0.6 miles, Maidstone West 0.7 miles

Address

Holland Road, Maidstone, Kent ME14

Directions

For directions to this property please contact us.





Wards
Helping you move forwards

Call Maidstone Branch 01622 683737 ■ wardsofkent.co.uk



■ Legal advice should be taken to verify fixtures/fittings, planning, alterations and/or lease details ■ Appliances & services are untested, dimensions are approximate and floor plans are not to scale
■ Through a Homewise Home For Life Plan people aged 60+ can secure this property for up to 59% less, by purchasing a Lifetime Lease.



13155042/20230915/DS/MB