



Price
£350,000

Freehold

3x  1x  2x 

**Oxford Road,
Maidstone, Kent ME15**

OVER 60?

Secure this property
for up to **59% less!**

Wards
Helping you move forwards



Main features

- **Stunning house overlooking the fabulous Mote Park**
- **Updated throughout with modern fixtures and fittings including bespoke fitted kitchen with integrated white goods**
- **Generously sized bedrooms with 2 having fitted wardrobes**
- **Landscaped rear garden**
- **Within easy access of amenities including schools, shops and transport links**

Accommodation

GROUND FLOOR

Porch
Hallway
Lounge: 13'2 x 12'7 (4.02m x 3.84m)
Dining Area: 10'9 x 8'3 (3.28m x 2.52m)
Kitchen Area: 11'4 x 10'9 (3.46m x 3.28m)

FIRST FLOOR

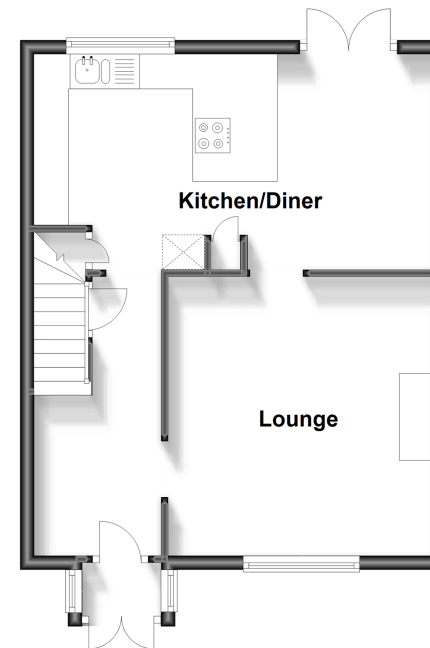
Landing
Bedroom 1: 13'3 x 10'4 up to fitted wardrobes (4.04m x 3.15m)
Bedroom 2: 11'2 x 10'2 (3.41m x 3.10m)
Bedroom 3: 8'3 x 8'2 up to fitted wardrobes (2.52m x 2.49m)
Bathroom

OUTSIDE

Rear Garden
Front Garden
Off Road Parking

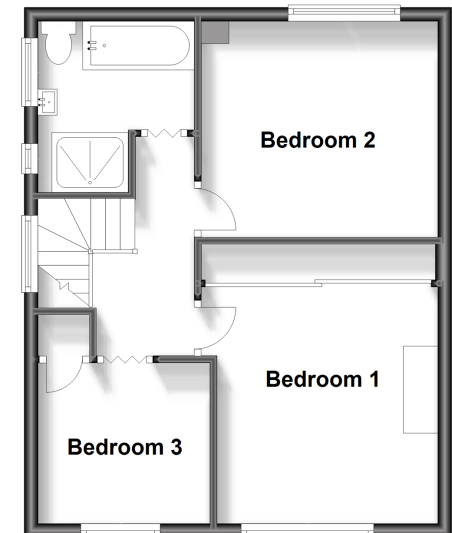
Ground Floor

Approx. 42.5 sq. metres (457.6 sq. feet)



First Floor

Approx. 42.5 sq. metres (457.0 sq. feet)



Call Maidstone - 01622 683737 ■ wardsofkent.co.uk

■ Legal advice should be taken to verify fixtures/fittings, planning, alterations and/or lease details
■ Through a Homewise Home For Life Plan people aged 60+ can secure this property for up to 59% less, by purchasing a Lifetime Lease.

■ Appliances & services are untested, dimensions are approximate and floor plans are not to scale



13155192/20240402/JH/HS1