



Price

£210,000

Leasehold

2x  2x  1x 

**Farleigh Hill, Tovil,
Maidstone, Kent ME15**

Wards
Helping you move forwards



Main features

- Generously sized split level maisonette in a fantastic location
- Bedroom one benefiting from a luxury en-suite shower room
- Close to local amenities
- Additional small third room perfect for use as a nursery/office
- Fantastic, sunny, rear private garden

Accommodation

GROUND FLOOR

Hallway

Kitchen: 10'9 x 10'3 (3.28m x 3.13m)

Lounge: 12'7 x 10'9 (3.84m x 3.28m)

Bedroom 2: 10'3 x 9'8 (3.13m x 2.95m)

Shower Room: 7'8 x 4'8 (2.34m x 1.42m)

FIRST FLOOR

Landing

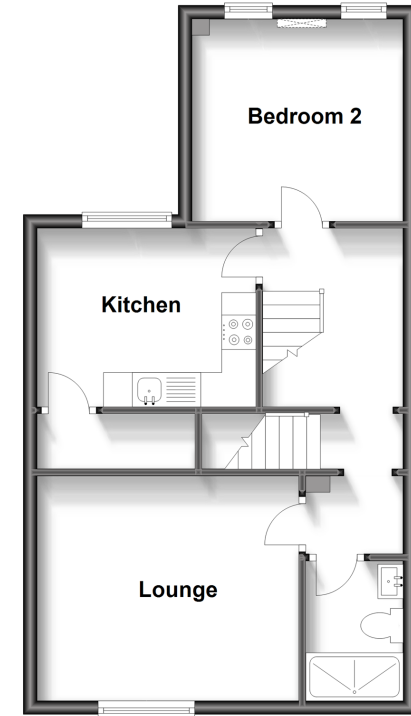
Bedroom 1: 14'10 x 9'1 (4.52m x 2.77m)

En-Suite Bathroom

Study/Nursery: 10'1 x 5'6 (3.08m x 1.68m)

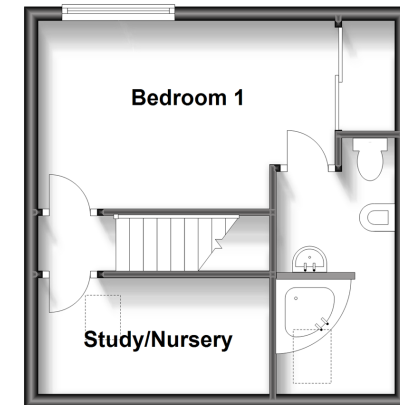
First Floor

Approx. 46.2 sq. metres (497.0 sq. feet)



Second Floor

Approx. 28.4 sq. metres (305.3 sq. feet)



Call Maidstone - 01622 683737 ■ wardsofkent.co.uk

- Legal advice should be taken to verify fixtures/fittings, planning, alterations and/or lease details
- Appliances & services are untested, dimensions are approximate and floor plans are not to scale



13155532/20230914/JH/HS1

Ground Floor