



OVER 60?

Secure this property
for up to **59% less!**

Price

£475,000

Freehold

3x  2x  2x 

Stevenson Close, Maidstone, Kent ME15

Wards
Helping you move forwards



Main features

- A modern house in a great location
- Garage and driveway plus double gates to side
- Well presented and maintained throughout
- Log burner in the lounge, en-suite shower room to bedroom 1
- Extremely quiet and convenient, short stroll into town, riverside walks

Accommodation

GROUND FLOOR

Entrance Hall: 15'10 x 3'4 (4.83m x 1.02m)
 Cloakroom : 4'9 x 3'0 (1.45m x 0.92m)
 Kitchen/Diner: 20'9 x 11'0 (6.33m x 3.36m)
 Lounge: 14'9 x 13'3 (4.50m x 4.04m)
 Study/Bedroom 4: 9'6 x 8'6 (2.90m x 2.59m)

FIRST FLOOR

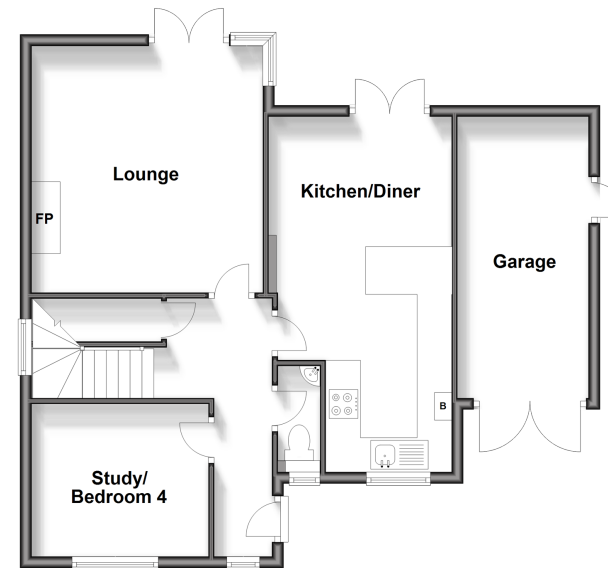
Landing
 Bedroom 1: 12'7 x 10'2 (3.84m x 3.10m)
 En-Suite Shower Room: 7'5 x 5'2 (2.26m x 1.58m)
 Bedroom 2: 13'3 x 10'0 (4.04m x 3.05m)
 Bedroom 3: 13'1 x 8'7 (3.99m x 2.62m)
 Bathroom: 6'7 x 6'4 (2.01m x 1.93m)

OUTSIDE

Rear Garden
 Front Garden
 Driveway
 Garage

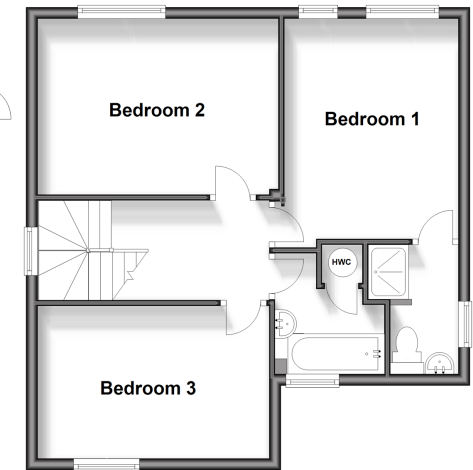
Ground Floor

Approx. 67.9 sq. metres (731.3 sq. feet)



First Floor

Approx. 51.1 sq. metres (549.9 sq. feet)



Call Maidstone - 01622 683737 ■ wardsofkent.co.uk

■ Legal advice should be taken to verify fixtures/fittings, planning, alterations and/or lease details
 ■ Through a Homewise Home For Life Plan people aged 60+ can secure this property for up to 59% less, by purchasing a Lifetime Lease.

■ Appliances & services are untested, dimensions are approximate and floor plans are not to scale