



OVER 60?

Secure this property
for up to **59% less!**

Price

£450,000

Freehold

3x  2x  1x 

**All Angels Close,
Maidstone, Kent ME16**

Wards
Helping you move forwards



Main features

- Beautifully presented home offered in excellent condition
- Located in a private cul-de-sac
- Benefitting from double bedrooms and en-suite facilities
- Gorgeous, landscaped rear garden with decking area & patio
- Close to Schools, the town centre & Maidstone West train station

Accommodation

GROUND FLOOR

Hallway

Cloakroom

Lounge: 16'4 x 10'10 (4.98m x 3.30m)

Kitchen/Diner: 18'8 x 11'7 (5.69m x 3.53m)

FIRST FLOOR

Landing

Bedroom 1: 12'1 x 11'0 (3.69m x 3.36m)

En-Suite Shower Room

Bedroom 2: 11'9 x 11'0 (3.58m x 3.36m)

Bedroom 3: 11'9 x 7'4 (3.58m x 2.24m)

Bathroom

OUTSIDE

Rear Garden

Front Garden

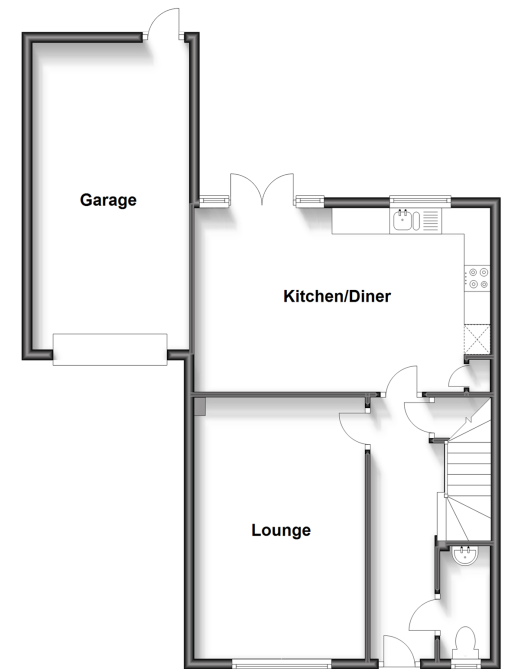
Driveway

Garage

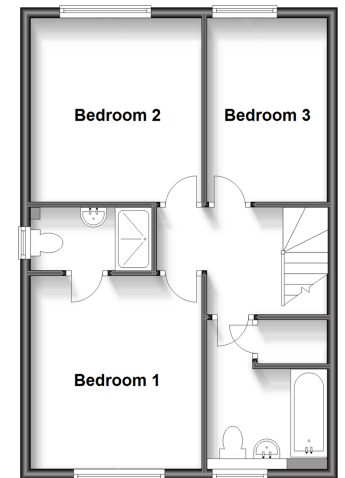
Call Maidstone - 01622 683737 ■ wardsofkent.co.uk

- Legal advice should be taken to verify fixtures/fittings, planning, alterations and/or lease details
- Appliances & services are untested, dimensions are approximate and floor plans are not to scale
- Through a Homewise Home For Life Plan people aged 60+ can secure this property for up to 59% less, by purchasing a Lifetime Lease.

Ground Floor
Approx. 86.9 sq. metres (720.1 sq. feet)



First Floor
Approx. 49.7 sq. metres (534.6 sq. feet)



13155868/20230525/JH/HS1