



**Price**  
**£270,000**

**Freehold**

2x  1x  1x 

**Grecian Street,  
Maidstone, Kent ME14**

**OVER 60?**

Secure this property  
for up to **59% less!**

*Wards*  
Helping you move forwards





## Main features

- Attractive period style house
- Double chamber cellar
- Very well presented throughout
- Lovely period features
- Convenient town centre location, a short walk from the station and the shops

## Accommodation

### GROUND FLOOR

Lounge: 12'5 x 9'4 (3.79m x 2.85m)  
 Kitchen: 12'7 x 10'8 (3.84m x 3.25m)  
 Rear Lobby  
 Bathroom: 8'2 x 6'1 (2.49m x 1.86m)

### CELLAR

Cellar 1  
 Cellar 2

### FIRST FLOOR

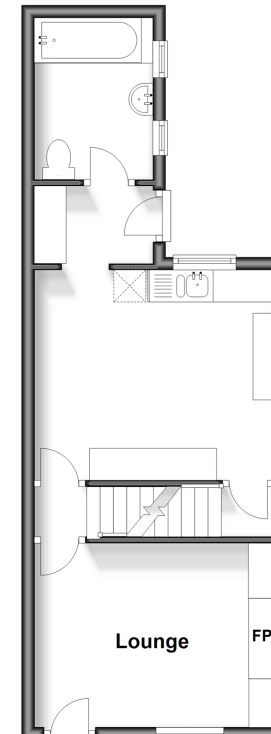
Landing  
 Bedroom 1: 12'6 x 11'1 (3.81m x 3.38m)  
 Bedroom 2: 12'6 x 9'4 (3.81m x 2.85m)

### OUTSIDE

Rear Garden  
 Small Front Garden

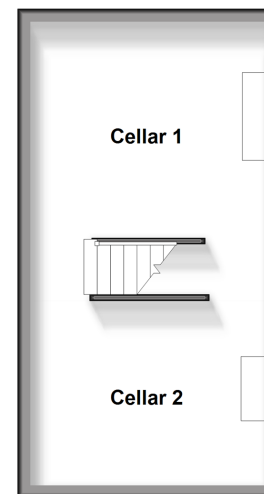
### Ground Floor

Approx. 34.5 sq. metres (371.1 sq. feet)



### Cellar

Approx. 27.2 sq. metres (292.3 sq. feet)



### First Floor

Approx. 27.2 sq. metres (292.4 sq. feet)



**Call Maidstone - 01622 683737 ■ wardsofkent.co.uk**

■ Legal advice should be taken to verify fixtures/fittings, planning, alterations and/or lease details  
 ■ Through a Homewise Home For Life Plan people aged 60+ can secure this property for up to 59% less, by purchasing a Lifetime Lease.

■ Appliances & services are untested, dimensions are approximate and floor plans are not to scale



13156116/20240308/MB/MB