



Price
£450,000

Freehold

4x  1x  2x 

**Hastings Road,
Maidstone, Kent ME15**

OVER 60?

Secure this property
for up to **59% less!**

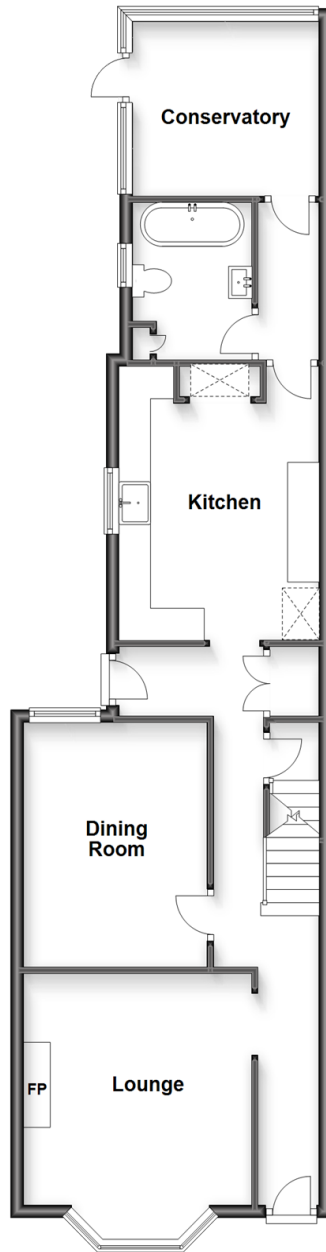


Video Tour available

Wards
Helping you move forwards

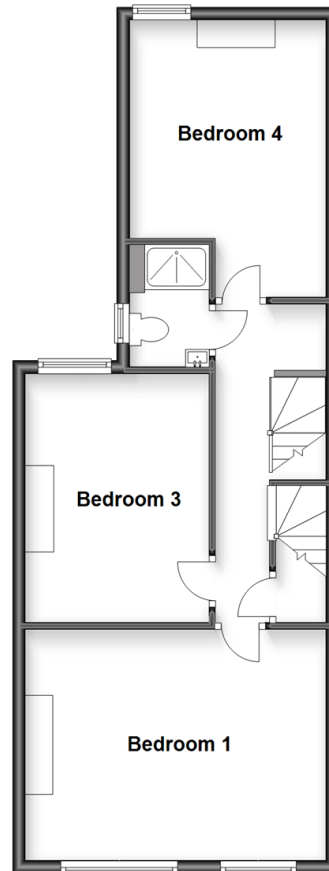
Ground Floor

Approx. 68.8 sq. metres (740.0 sq. feet)



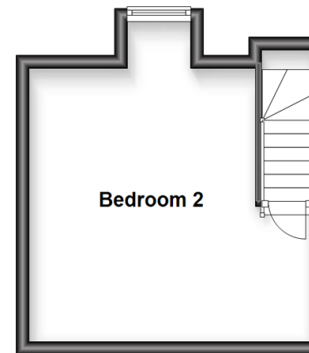
First Floor

Approx. 53.0 sq. metres (571.0 sq. feet)



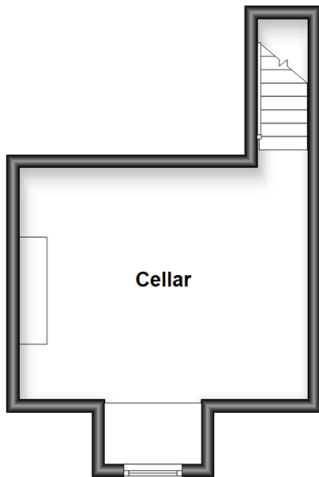
Split Level Second Floor

Approx. 20.1 sq. metres (216.2 sq. feet)



Basement

Approx. 19.7 sq. metres (212.4 sq. feet)



Accommodation

GROUND FLOOR

Hallway

Lounge: 11'11 x 11'11 (3.63m x 3.63m)

Dining Room: 12'0 x 9'0 (3.66m x 2.75m)

Kitchen: 13'0 x 10'0 (3.97m x 3.05m)

Conservatory: 10'0 x 8'11 (3.05m x 2.72m)

Bathroom

BASEMENT

Cellar: 15'0 x 11'10 (4.58m x 3.61m)

FIRST FLOOR

Landing

Bedroom 1: 15'0 x 12'0 (4.58m x 3.66m)

Bedroom 3: 12'0 x 9'0 (3.66m x 2.75m)

Shower Room

Bedroom 4: 10'11 x 10'0 (3.33m x 3.05m)

SPLIT-LEVEL SECOND FLOOR

Landing

Bedroom 2: 13'0 x 11'0 (3.97m x 3.36m)

OUTSIDE

Rear Garden

Hard Standing To Front



Main features

- Spacious & beautifully presented character home
- Updated sympathetically throughout
- Attic conversion, perfect for use as a teenage suite
- Fabulous conservatory and dry basement
- Located on one of Maidstone's premier roads close to schools and Mote Park



Nearest Schools

Primary Schools: Archbishop Courtenay Primary 0.7 miles, East Borough Primary 0.7 miles, Park Way Primary 0.9 miles

Secondary Schools: Maidstone Grammar School 0.4 miles



Transport Information

Train Stations: Maidstone West 0.8 miles, Maidstone Barracks 1.1 miles, Maidstone East 1.2 miles



Address

Hastings Road, Maidstone, Kent ME15



Directions

For directions to this property please contact us.



Wards
Helping you move forwards

Call Maidstone Branch 01622 683737 ■ wardsofkent.co.uk



■ Legal advice should be taken to verify fixtures/fittings, planning, alterations and/or lease details ■ Appliances & services are untested, dimensions are approximate and floor plans are not to scale
■ Through a Homewise Home For Life Plan people aged 60+ can secure this property for up to 59% less, by purchasing a Lifetime Lease.



13156132/20230510/SS1/HS1