



OVER 60?

Secure this property
for up to **59% less!**

Price

£420,000

Freehold

3x  1x  2x 

**St. Lukes Road,
Maidstone, Kent ME14**

Wards
Helping you move forwards

Accommodation

GROUND FLOOR

Hallway

Lounge: 12'5 x 11'6 (3.79m x 3.51m)

Dining Area: 13'9 x 12'10 (4.19m x 3.91m)

Kitchen Area: 12'7 x 9'2 (3.84m x 2.80m)

Cloakroom

BASEMENT

Cellar: 13'4 x 11'4 (4.07m x 3.46m)

FIRST FLOOR

Landing

Bedroom 1: 11'6 x 10'5 (3.51m x 3.18m)

Bedroom 2: 12'11 x 10'9 (3.94m x 3.28m)

Bedroom 3: 9'2 x 8'4 (2.80m x 2.54m)

Bathroom

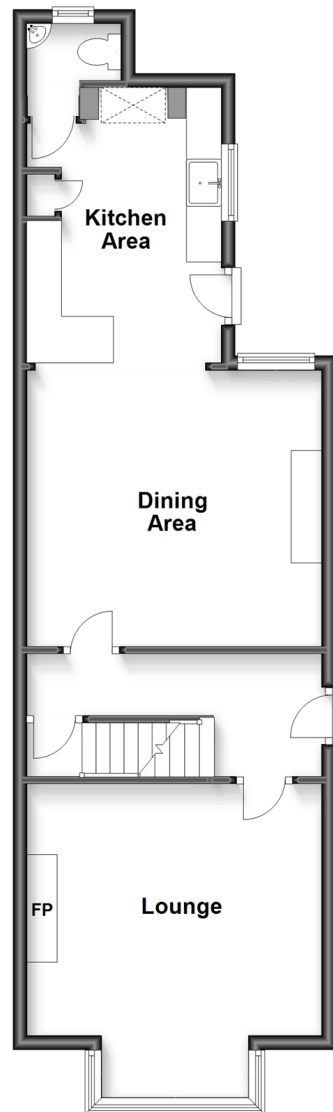
OUTSIDE

Rear Garden

Front Garden

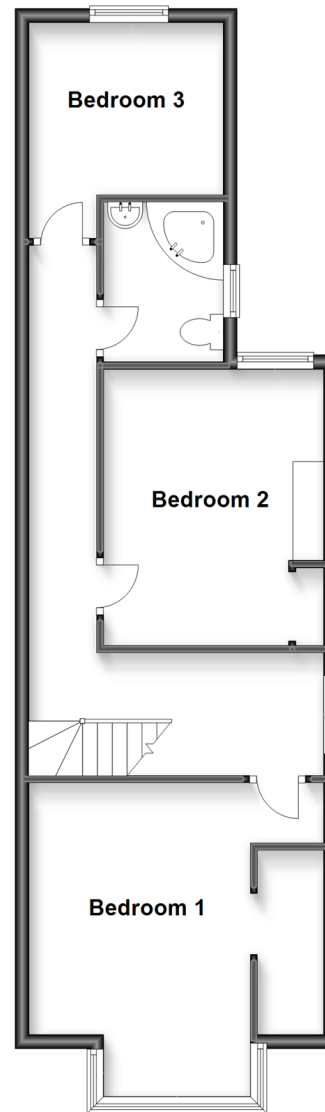
Ground Floor

Approx. 53.7 sq. metres (578.2 sq. feet)



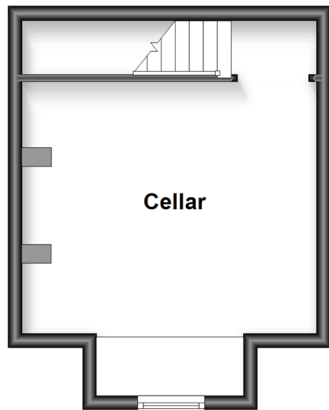
First Floor

Approx. 54.3 sq. metres (585.0 sq. feet)



Basement

Approx. 20.5 sq. metres (220.1 sq. feet)





Main features

- Beautifully presented family house
- Located on one of Maidstone's most sought-after roads
- Large amounts of living space
- Roomy lounge with bay-fronted windows, log burn
- Basement, perfect for converting into a cinema room, home office or additional bedroom



Nearest Schools

Primary Schools: East Borough Primary 0.5 miles, North Borough Junior School 0.9 miles, Park Way Primary 1.3 miles

Secondary Schools: Invicta Grammar School 0.6 miles



Transport Information

Train Stations: Maidstone East 0.9 miles, Maidstone West 1.5 miles, Maidstone Barracks 1.8 miles



Address

St. Lukes Road, Maidstone, Kent ME14



Directions

For directions to this property please contact us.



Wards
Helping you move forwards

Call Maidstone Branch 01622 683737 ■ wardsofkent.co.uk



■ Legal advice should be taken to verify fixtures/fittings, planning, alterations and/or lease details ■ Appliances & services are untested, dimensions are approximate and floor plans are not to scale
■ Through a Homewise Home For Life Plan people aged 60+ can secure this property for up to 59% less, by purchasing a Lifetime Lease.



13156195/20231213/CV/HS1