



**Price**  
**£490,000**

**Freehold**

4x  3x  1x 

**Beaver Road, Allington,  
Maidstone, Kent ME16**

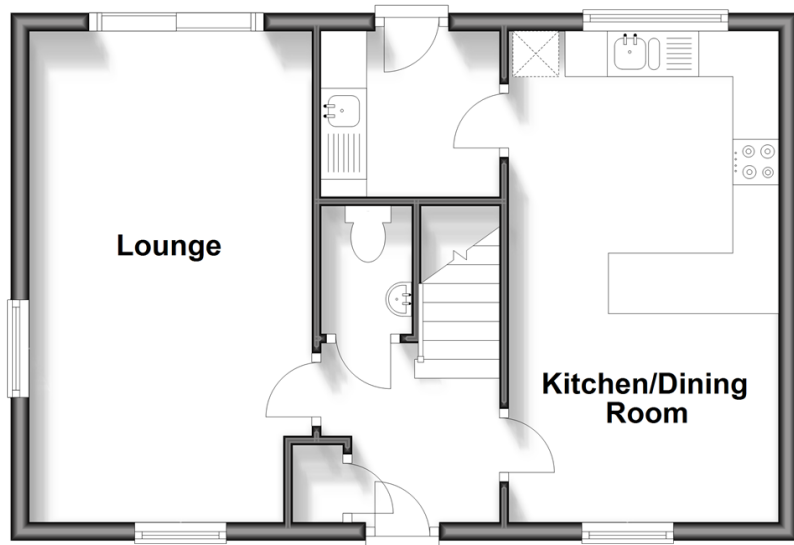
**OVER 60?**

Secure this property  
for up to **59% less!**

*Wards*  
Helping you move forwards

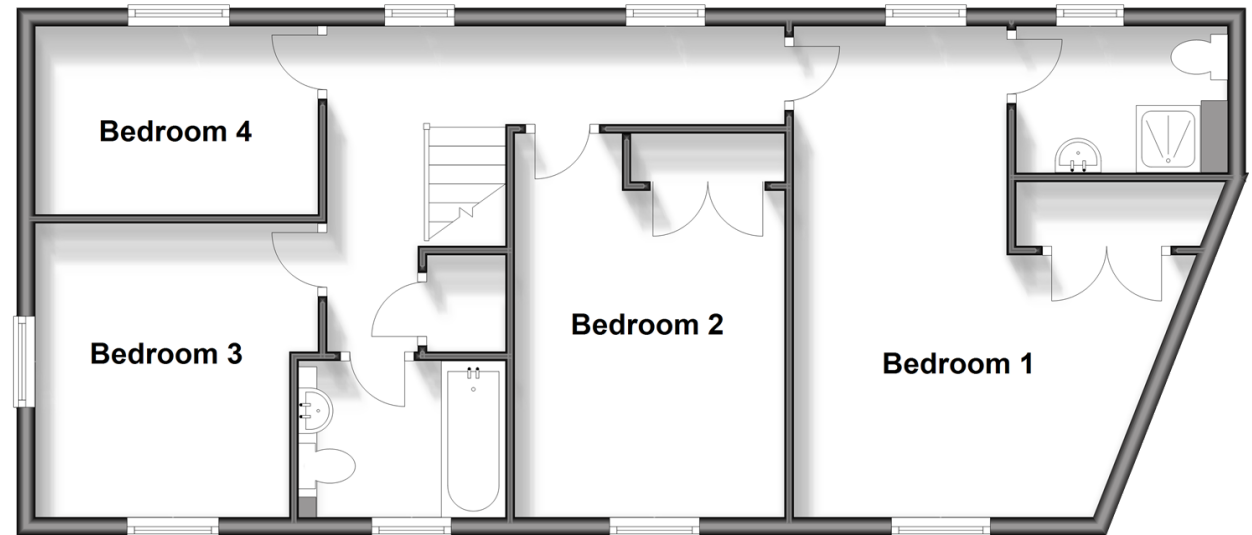
## Ground Floor

Approx. 44.2 sq. metres (476.0 sq. feet)



## First Floor

Approx. 68.0 sq. metres (732.4 sq. feet)



## Accommodation

### GROUND FLOOR

Entrance Hall  
Cloakroom  
Lounge: 17'7 x 10'0 (5.36m x 3.05m)  
Kitchen/Dining Room: 17'6 x 9'7 (5.34m x 2.92m)  
Utility Room: 6'4 x 5'10 (1.93m x 1.78m)

### FIRST FLOOR

Landing  
Bedroom 1: 17'7 (5.36m) x 13'8 (4.17m) narrowing to 7'7 (2.31m)  
En-Suite Shower Room  
Bedroom 2: 13'9 x 9'9 (4.19m x 2.97m)  
Bedroom 3: 10'6 x 9'4 (3.20m x 2.85m)  
Bedroom 4: 10'5 x 6'9 (3.18m x 2.06m)  
Bathroom

### OUTSIDE

Rear Garden  
Front Garden  
Car Port  
Garage





## Main features

- Deceptively spacious family house
- Set within a cul-de-sac located within Allington
- Fitted kitchen/dining room with a separate utility room and cloakroom
- Double glazing and central heating
- Ample off road parking via a car port and single garage



### Nearest Schools

Primary Schools: Palace Wood Primary 0.7 miles, Allington Primary 0.7 miles, Brunswick House Primary 1.5 miles

Secondary Schools: Aylesford School - Sports College 1.8



### Transport Information

Train Stations: Maidstone Barracks 1.8 miles, Barming 1.8 miles, Maidstone West 2.0 miles



### Address

Beaver Road, Allington, Maidstone, Kent ME16



### Directions

For directions to this property please contact us.





**Wards**  
Helping you move forwards

Call Maidstone Branch 01622 683737 ■ [wardsofkent.co.uk](http://wardsofkent.co.uk)



- Legal advice should be taken to verify fixtures/fittings, planning, alterations and/or lease details
- Appliances & services are untested, dimensions are approximate and floor plans are not to scale
- Through a Homewise Home For Life Plan people aged 60+ can secure this property for up to 59% less, by purchasing a Lifetime Lease.



13156200/20240405/CV/DS