



**OVER 60?**  
You could get up to  
**59% off the price!\***

**Price**  
**£100,000**  
**Leasehold**

1x  1x  1x 

Hengist Court, Marsham Street, Maidstone,  
Kent ME14

*Wards*  
Helping you move forwards





## Main features

- First floor retirement flat
- Lift access to all floors
- Beautiful communal gardens & pleasant common area's for residents
- No forward chain
- Town centre location, a short walk from the shopping area

## Accommodation

### FIRST FLOOR

#### Hallway

**Lounge:** 17'7 x 10'6 (5.36m x 3.20m)

**Kitchen:** 7'2 x 5'5 (2.19m x 1.65m)

**Bedroom 1:** 14'11 x 8'6 (4.55m x 2.59m)

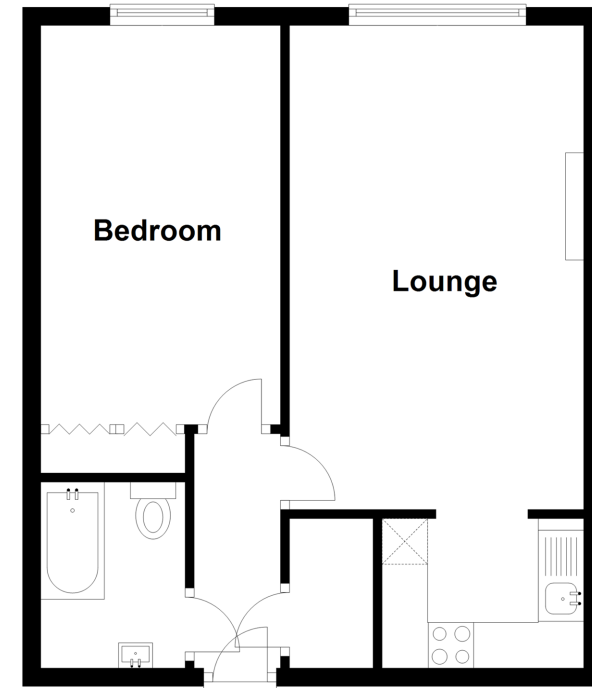
#### Bathroom

### OUTSIDE

#### Communal Grounds

## First Floor

Approx. 41.8 sq. metres (449.9 sq. feet)



**Call Maidstone - 01622 683737 ■ [wardsofkent.co.uk](http://wardsofkent.co.uk)**

■ Legal advice should be taken to verify fixtures/fittings, planning, alterations and/or lease details  
 ■ Our Homewise partnership offer a 'Home for Life' plan to buyers over 60, granting a lifetime lease for your protection and reducing the purchase price by up to 59%

■ Appliances & services are untested, dimensions are approximate and floor plans are not to scale



13156279/20220616/CV/MB