



Price
£265,000

Freehold

2x  1x  1x 

**Arundel Street,
Maidstone, Kent ME14**

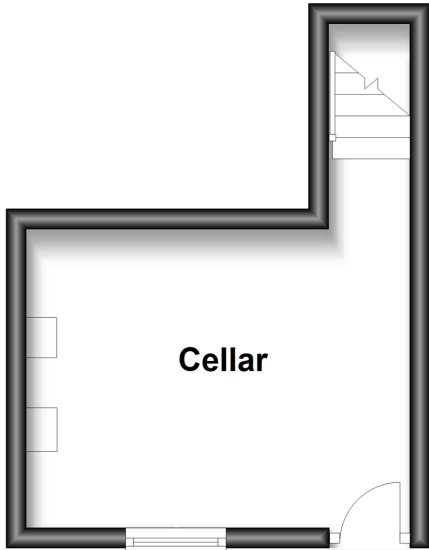
OVER 60?

Secure this property
for up to **59% less!**

Wards
Helping you move forwards

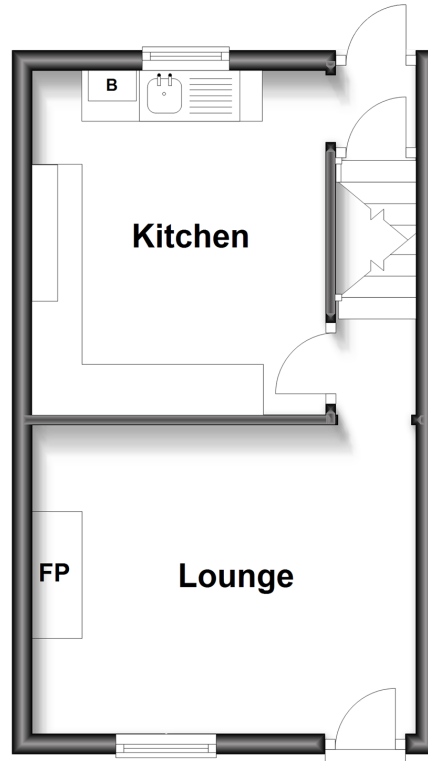
Basement

Approx. 12.9 sq. metres (138.9 sq. feet)



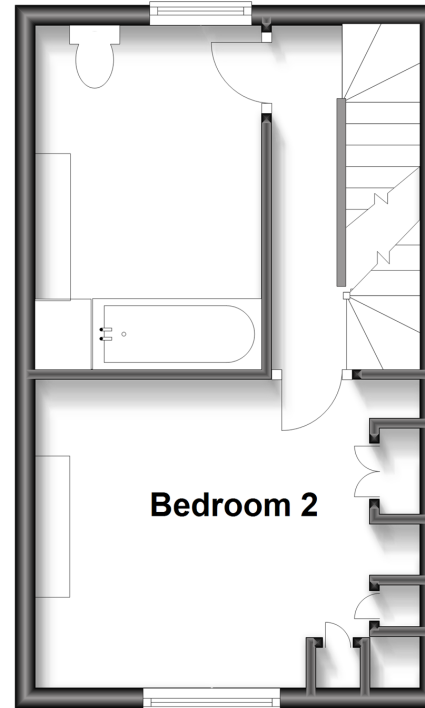
Ground Floor

Approx. 25.0 sq. metres (269.1 sq. feet)



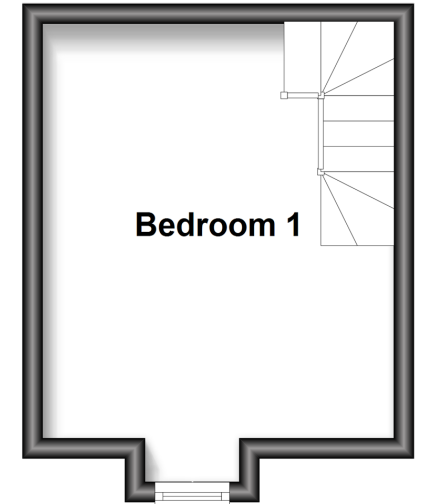
First Floor

Approx. 25.0 sq. metres (269.1 sq. feet)



Second Floor

Approx. 14.7 sq. metres (158.4 sq. feet)



Accommodation

GROUND FLOOR

Lounge: 12'0 x 11'0 (3.66m x 3.36m)

Kitchen: 11'1 x 9'9 (3.38m x 2.97m)

BASEMENT

Cellar: 12'3 x 9'5 (3.74m x 2.87m)

FIRST FLOOR

Landing

Bedroom 2: 12'0 x 10'10 (3.66m x 3.30m)

Bathroom: 11'0 x 6'8 (3.36m x 2.03m)

SECOND FLOOR

Landing

Bedroom 1: 12'4 x 11'4 (3.76m x 3.46m)

OUTSIDE

Rear Garden

Small Front Garden



Main features

- Character period style cottage with accommodation over 4 floors
- No forward chain
- Ideal access for Maidstone East stations & the town centre
- Low maintenance rear garden with artificial lawn
- Useful basement, ideal for conversion (Subject to planning permission)



Nearest Schools

Primary Schools: North Borough Junior School 0.1 miles, Brunswick House Primary 0.6 miles, Sandling Primary 0.7 miles



Transport Information

Train Stations: Maidstone East 0.3 miles, Maidstone Barracks 0.5 miles, Maidstone West 0.8 miles



Address

Arundel Street, Maidstone, Kent ME14



Directions

For directions to this property please contact us.



Wards
Helping you move forwards

Call Maidstone Branch 01622 683737 ■ wardsofkent.co.uk



■ Legal advice should be taken to verify fixtures/fittings, planning, alterations and/or lease details ■ Appliances & services are untested, dimensions are approximate and floor plans are not to scale
■ Through a Homewise Home For Life Plan people aged 60+ can secure this property for up to 59% less, by purchasing a Lifetime Lease.



13156372/20221115/MB/MB