



Price
£115,000

Leasehold

1x  1x  1x 

**Kingfisher Meadow,
Maidstone, Kent ME16**

OVER 60?

Secure this property
for up to **59% less!**



Video Tour available

Wards
Helping you move forwards



Main features

- **Spacious 3rd floor studio apartment with lift access**
- **Convenient town centre location**
- **Available with no onward chain**
- **Pleasant balcony providing a welcome outdoor space**
- **Easy access for Maidstone East & West stations & motorway access**

Accommodation

THIRD FLOOR

Hallway

Living/Bedroom Area: 17'2 x 13'7
(5.24m x 4.14m)

Balcony

Kitchen : 8'8 x 8'2 (2.64m x 2.49m)

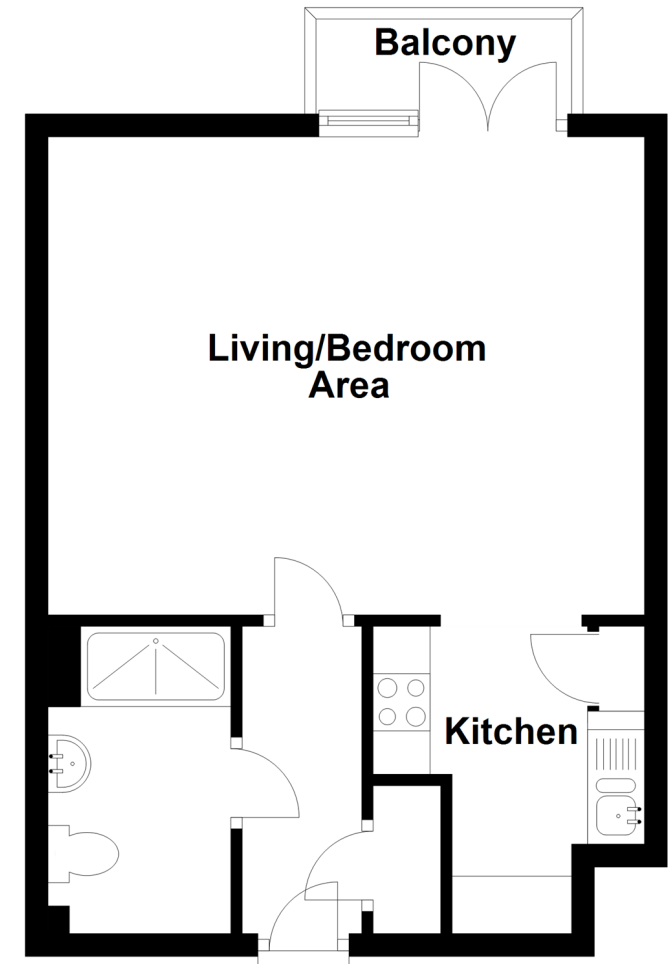
Shower Room : 8'7 x 4'7 (2.62m x 1.40m)

OUTSIDE

Communal Areas

Third Floor

Approx. 35.5 sq. metres (381.8 sq. feet)



Call Maidstone - 01622 683737 ■ wardsofkent.co.uk

- Legal advice should be taken to verify fixtures/fittings, planning, alterations and/or lease details
- Appliances & services are untested, dimensions are approximate and floor plans are not to scale
- Through a Homewise Home For Life Plan people aged 60+ can secure this property for up to 59% less, by purchasing a Lifetime Lease.



13156790/20230524/SS1/MB