



OVER 60?

Secure this property
for up to **59% less!**

Price
£300,000

Freehold

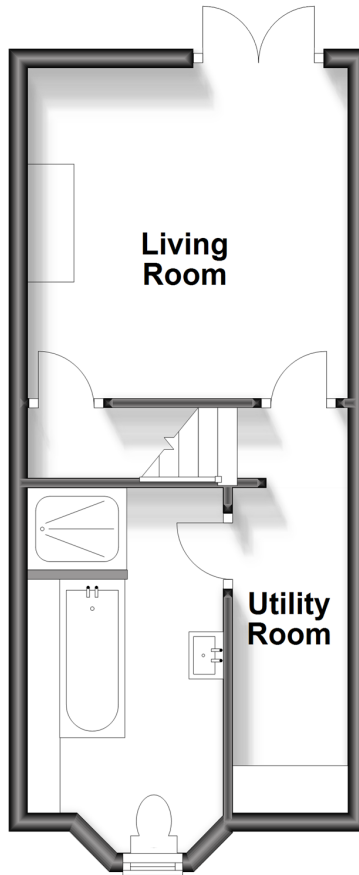
2x  1x  1x 

**Charlton Street,
Maidstone, Kent ME16**

Wards
Helping you move forwards

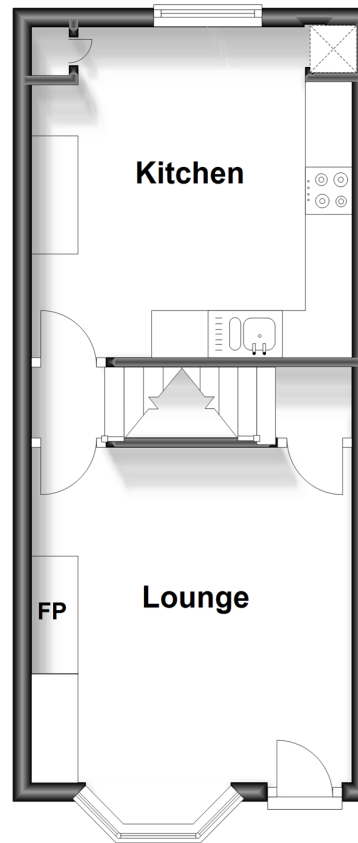
Lower Ground Floor

Approx. 27.7 sq. metres (298.6 sq. feet)



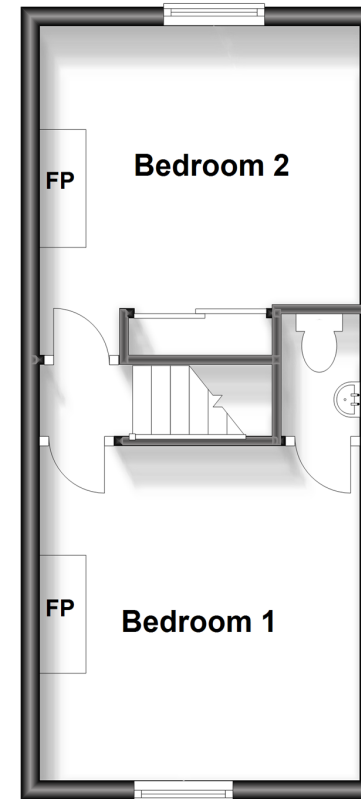
Ground Floor

Approx. 27.8 sq. metres (298.8 sq. feet)



First Floor

Approx. 27.6 sq. metres (297.0 sq. feet)



Accommodation

GROUND FLOOR

Lounge: 11'5 x 11'1 (3.48m x 3.38m)

Kitchen: 11'5 x 9'9 (3.48m x 2.97m)

LOWER-GROUND FLOOR

Hallway

Living Room: 11'3 x 11'2 (3.43m x 3.41m)

Bathroom

Utility Room

FIRST FLOOR

Landing

Bedroom 1: 11'6 x 11'3 (3.51m x 3.43m)

En-Suite w.c.

Bedroom 2: 11'2 x 9'5 (3.41m x 2.87m)

OUTSIDE

Rear Garden

Front Garden



Main features

- Bay fronted Victorian house with a spacious garden
- Accommodation arranged over 3 floors
- Double glazing and central heating
- Modern kitchen and 4 piece bathroom suite
- Easy access to both the town centre and walks along the River Medway



Nearest Schools

Primary Schools: Maidstone, St Michael's C of E Junior School 0.6 miles, West Borough Primary 0.7 miles, Allington Primary 1.4 miles

Secondary Schools: St Augustine Academy 0.5 miles

Transport Information

Train Stations: East Farleigh 1.1 miles, Maidstone West 1.2 miles, Barming 1.5 miles

Address

Charlton Street, Maidstone, Kent ME16

Directions

For directions to this property please contact us.





Wards
Helping you move forwards

Call Maidstone Branch 01622 683737 ■ wardsofkent.co.uk



- Legal advice should be taken to verify fixtures/fittings, planning, alterations and/or lease details
- Appliances & services are untested, dimensions are approximate and floor plans are not to scale
- Through a Homewise Home For Life Plan people aged 60+ can secure this property for up to 59% less, by purchasing a Lifetime Lease.



13157004/20240309/CV/DS