

OVER 60?

Secure this property
for up to **59% less!**



Price

£310,000

Freehold

2x  1x  1x 

Caernarvon Drive, Maidstone, Kent, ME15

Wards
Helping you move forwards



Main features

- Link-detached bungalow located within a quiet cul-de-sac
- Good size double bedrooms both with fitted wardrobes
- Open plan lounge/ diner with additional conservatory
- Bus stops just a short walk away
- Spacious rear garden with side access

Accommodation

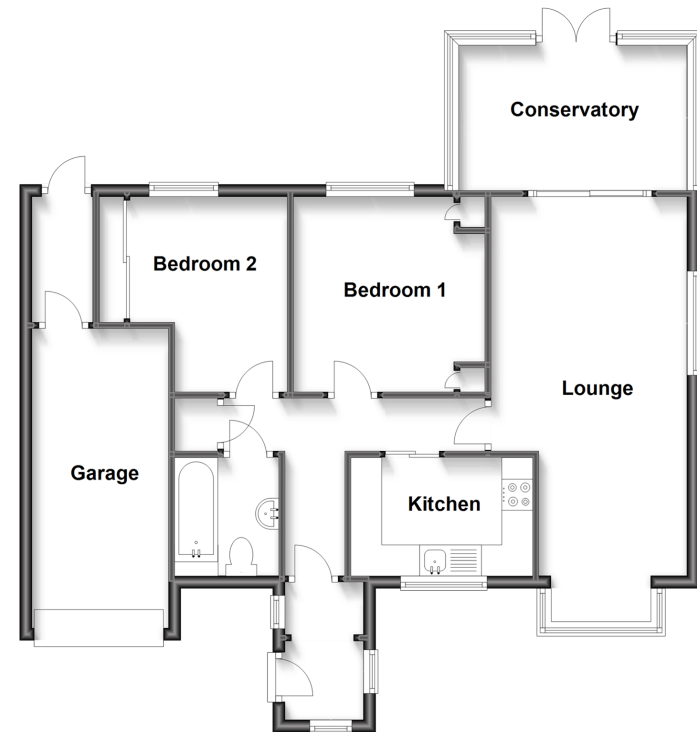
GROUND FLOOR

Entrance Hall
 Bathroom
 Bedroom 2: 10'0 x 9'10 (3.05m x 3.00m)
 Bedroom 1: 10'2 x 9'11 (3.10m x 3.02m)
 Kitchen: 9'7 x 6'2 (2.92m x 1.88m)
 Lounge: 19'11 x 10'4 (6.07m x 3.15m)
 Conservatory: 11'11 x 7'9 (3.63m x 2.36m)

OUTSIDE

Driveway and Garage
 Front and Rear Gardens

Ground Floor
 Approx. 79.3 sq. metres (853.2 sq. feet)



Call Maidstone - 01622 683737 ■ wardsofkent.co.uk

■ Legal advice should be taken to verify fixtures/fittings, planning, alterations and/or lease details
 ■ Through a Homewise Home For Life Plan people aged 60+ can secure this property for up to 59% less, by purchasing a Lifetime Lease.

■ Appliances & services are untested, dimensions are approximate and floor plans are not to scale



13157032/20230826/HS1/HS1