



Price
£325,000

Freehold

4x  2x  1x 

**Woodside Road,
Maidstone, Kent ME15**

OVER 60?

Secure this property
for up to **59% less!**

Wards
Helping you move forwards



Main features

- **Extended family home on a corner plot overlooking the green**
- **Downstairs bedroom with separate entrance, hallway, and wet room**
- **Hard standing to the front and rear with potential to create a driveway (subject to planning permission)**
- **Open plan kitchen/diner with patio doors leading to the well-established rear garden**
- **Well positioned with easy access to local shops, schools and bus routes**

Accommodation

GROUND FLOOR

Porch
Hallway
Lounge: 12'4 x 11'3 (3.76m x 3.43m)
Bedroom 4: 10'0 x 8'0 (3.05m x 2.44m)
Kitchen Area: 10'1 x 9'0 (3.08m x 2.75m)
Dining Area: 10'1 x 9'11 (3.08m x 3.02m)
Wet Room

FIRST FLOOR

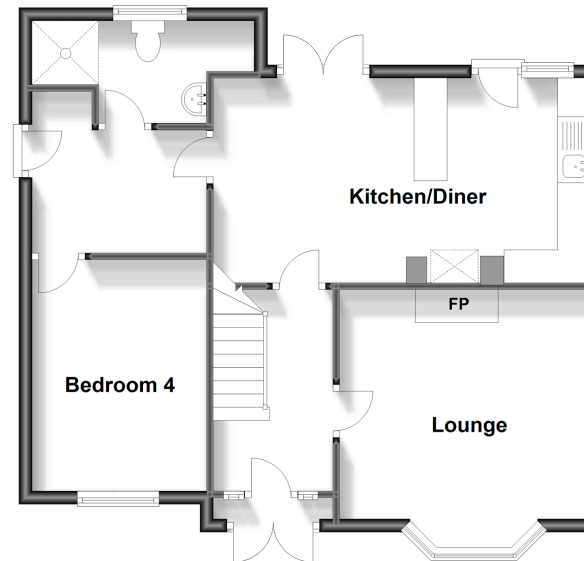
Landing
Bedroom 1: 11'6 x 10'7 (3.51m x 3.23m)
Bedroom 2: 13'1 x 8'0 (3.99m x 2.44m)
Bedroom 3: 8'0 x 6'7 (2.44m x 2.01m)
Bathroom

OUTSIDE

Rear Garden
Front garden
Driveway

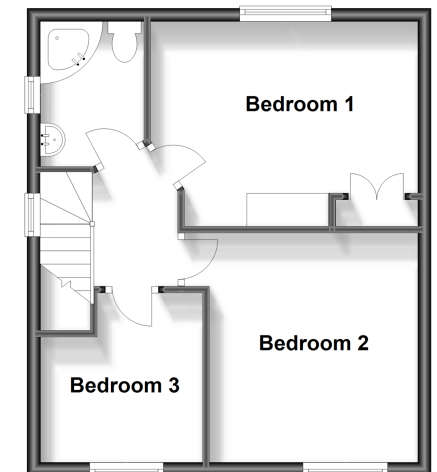
Ground Floor

Approx. 58.3 sq. metres (627.4 sq. feet)



First Floor

Approx. 38.1 sq. metres (409.6 sq. feet)



Call Maidstone - 01622 683737 ■ wardsofkent.co.uk

■ Legal advice should be taken to verify fixtures/fittings, planning, alterations and/or lease details
■ Through a Homewise Home For Life Plan people aged 60+ can secure this property for up to 59% less, by purchasing a Lifetime Lease.

■ Appliances & services are untested, dimensions are approximate and floor plans are not to scale