



OVER 60?

You could get up to
59% off the price!*



Video Tour available

Price

£385,000

Freehold

3x  1x  2x 

**Hackney Road,
Maidstone, Kent ME16**

Wards
Helping you move forwards



Main features

- Beautifully presented & extended house
- Popular location just outside of Maidstone town centre
- Open plan kitchen/dining area
- Bedroom 2 with views over Barming Orchards & beyond
- Within easy reach of local schools, shops & stations with direct links to London

Accommodation

GROUND FLOOR

Hallway

Lounge: 11'6 x 10'9 (3.51m x 3.28m)

Dining Area: 11'6 x 9'6 (3.51m x 2.90m)

Kitchen: 16'8 x 12'2 (5.08m x 3.71m)

Cloakroom

FIRST FLOOR

Landing

Bedroom 1: 11'6 x 10'10 (3.51m x 3.30m)

Bedroom 2: 11'7 x 9'7 (3.53m x 2.92m)

Bedroom 3: 6'9 x 5'6 (2.06m x 1.68m)

Bathroom

OUTSIDE

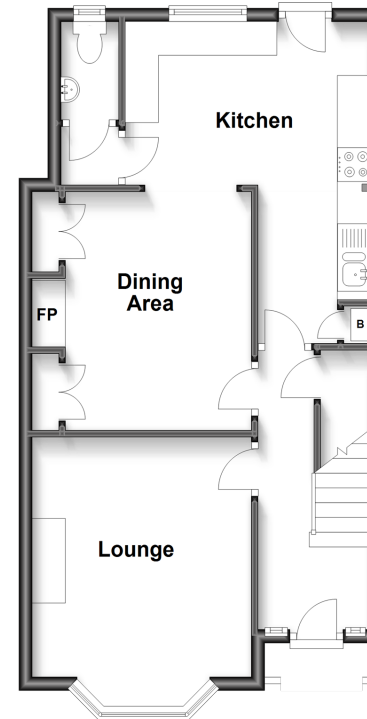
Rear Garden

Front Garden

Driveway

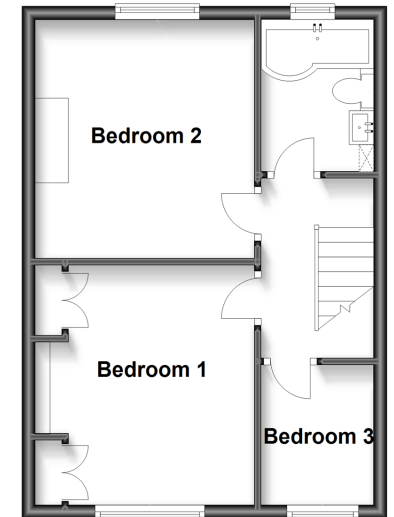
Ground Floor

Approx. 47.3 sq. metres (509.2 sq. feet)



First Floor

Approx. 36.6 sq. metres (393.8 sq. feet)



Call Maidstone - 01622 683737 ■ wardsofkent.co.uk

- Legal advice should be taken to verify fixtures/fittings, planning, alterations and/or lease details
- Our Homewise partnership offer a 'Home for Life' plan to buyers over 60, granting a lifetime lease for your protection and reducing the purchase price by up to 59%

- Appliances & services are untested, dimensions are approximate and floor plans are not to scale



13157115/20221011/CF/HS1