



**OVER 60?**

You could get up to  
**59% off** the price!\*



Video Tour available

**Price**

**£450,000**

**Freehold**

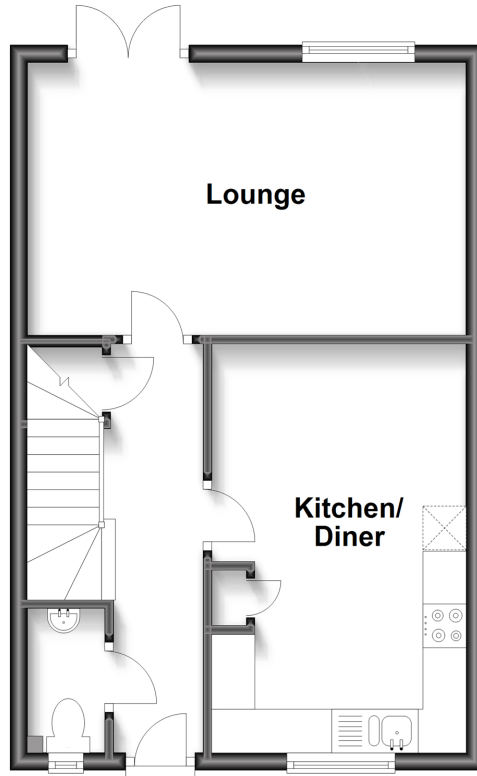
4x  2x  1x 

**Whatman Drive,  
Maidstone, Kent ME14**

*Wards*  
Helping you move forwards

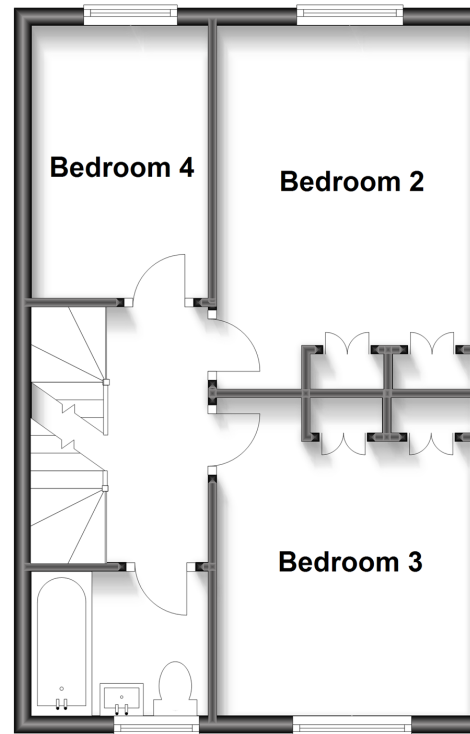
## Ground Floor

Approx. 40.1 sq. metres (431.2 sq. feet)



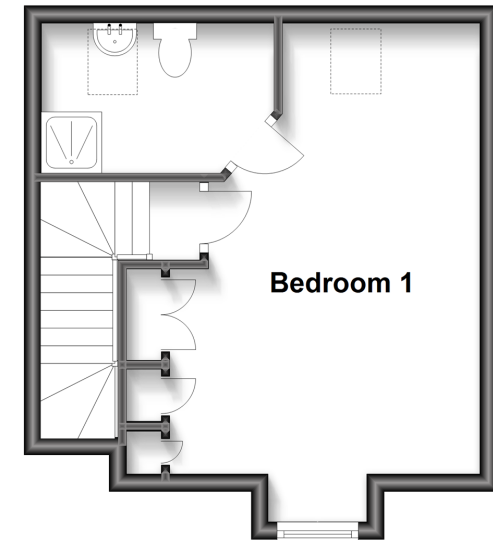
## First Floor

Approx. 40.1 sq. metres (431.2 sq. feet)



## Second Floor

Approx. 26.4 sq. metres (284.0 sq. feet)



## Accommodation

### GROUND FLOOR

Hallway

Cloakroom

**Kitchen/Diner:** 15'4 x 9'8 (4.68m x 2.95m)

**Lounge:** 16'6 x 10'10 (5.03m x 3.30m)

### FIRST FLOOR

Landing

**Bedroom 2:** 13'4 x 9'8 up to fitted wardrobes (4.07m x 2.95m)

**Bedroom 3:** 11'11 x 9'8 up to fitted wardrobes (3.63m x 2.95m)

**Bedroom 4:** 10'10 x 6'8 (3.30m x 2.03m)

**Bathroom**

### SECOND FLOOR

Landing

**Bedroom 1:** 16'10 x 11'2 up to fitted wardrobes (5.13m x 3.41m)

**Dressing Area**

**En-Suite Shower Room**

### OUTSIDE

Rear Garden

**2 Allocated Parking Spaces**





## Main features

- Immaculately presented & well proportioned family house
- Located in a quiet cul-de-sac in Grove Green
- Benefitting from 8 years remaining on the NHBC guarantee
- Good size garden with large patio area & side access
- Spacious en-suite facilities & dressing area to bedroom 1



### Nearest Schools

Primary Schools: Maidstone, St John's C of E Primary 0.3 miles, East Borough Primary 0.7 miles, Roseacre Junior School 0.9 miles

Secondary Schools: Valley Park Community School 0.6



### Transport Information

Train Stations: Bearsted 1.1 miles, Maidstone East 1.2 miles, Maidstone Barracks 1.5 miles



### Address

Whatman Drive, Maidstone, Kent ME14



### Directions

For directions to this property please contact us.





**Wards**  
Helping you move forwards

Call Maidstone Branch 01622 683737 ■ [wardsofkent.co.uk](https://wardsofkent.co.uk)



- Legal advice should be taken to verify fixtures/fittings, planning, alterations and/or lease details
- Appliances & services are untested, dimensions are approximate and floor plans are not to scale
- Our Homewise partnership offer a 'Home for Life' plan to buyers over 60, granting a lifetime lease for your protection and reducing the purchase price by up to 59%



13157169/20220820/CV/HS1