



**Guide Price**  
**£425,000**

**Freehold**

4x  1x  1x 

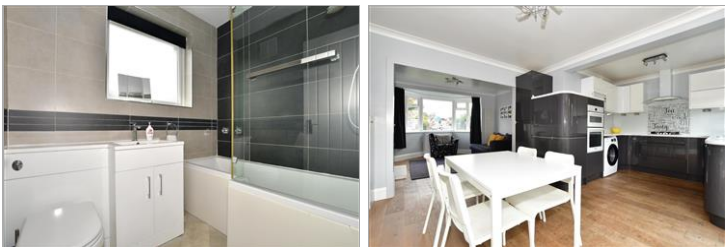
**Greenside, Maidstone,  
Kent ME15**

**OVER 60?**

Secure this property  
for up to **59% less!**

*Wards*  
Helping you move forwards





## Main features

- **Fabulous extended house on one of Maidstone's premier roads**
- **Large, open plan self contained annex, great for elderly relatives**
- **Additional office/ study perfect for those working from home**
- **Large, landscaped garden with incredible children's play area**
- **Living/dining/kitchen area**

## Accommodation

### GROUND FLOOR

Hallway

Kitchen/Dining/Living Area: 12'4 x 10'9 (3.76m x 3.28m) narrowing to 9'2 x 8'3 (2.80m x 2.52m)

Lounge: 13'0 x 12'0 (3.97m x 3.66m)

### FIRST FLOOR

Landing

Bedroom 2: 13'2 x 10'4 (4.02m x 3.15m)

Bedroom 3: 12'5 x 11'0 (3.79m x 3.36m)

Bedroom 4: 7'2 x 7'2 (2.19m x 2.19m)

Bathroom

### SECOND FLOOR

Landing

Bedroom 1: 16'8 (5.08m) narrowing to 12'4 (3.76m) x 9'4 (2.85m)

Study: 6'11 x 4'11 (2.11m x 1.50m)

### OUTSIDE

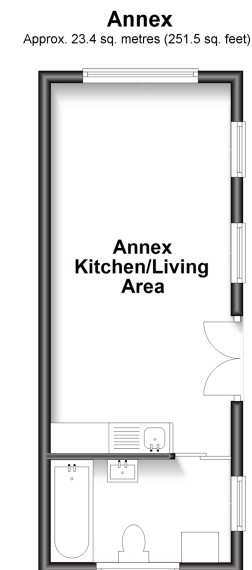
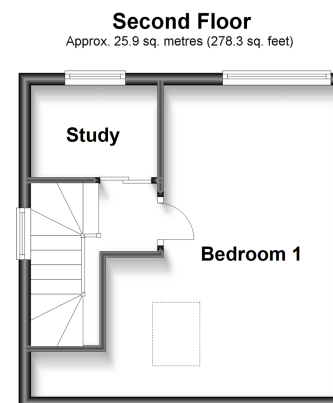
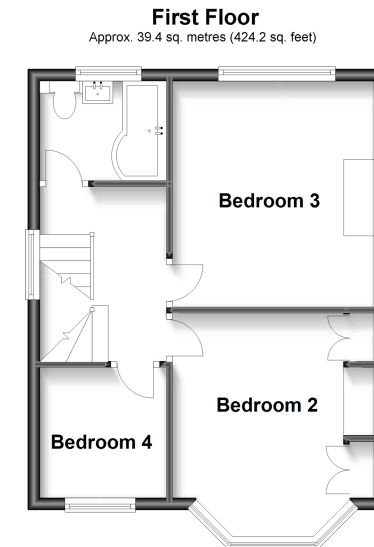
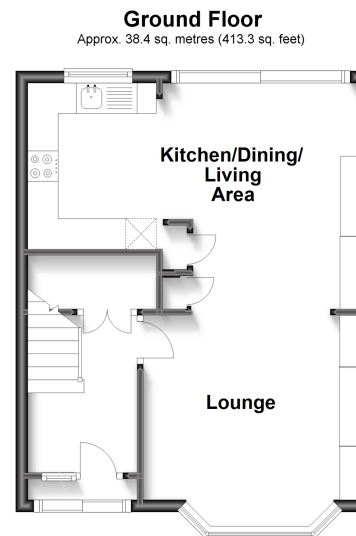
Rear Garden

Annex: 19'9 x 9'9 (6.02m x 2.97m) narrowing to 9'9 x 7'0 (2.97m x 2.14m)

Pool

Front Garden

Driveway



**Call Maidstone - 01622 683737 ■ [wardsofkent.co.uk](http://wardsofkent.co.uk)**

- If buying to let, the energy rating will need to be improved to at least 'E' rating before you can let the property
- Legal advice should be taken to verify fixtures/fittings, planning, alterations and/or lease details
- Appliances & services are untested, dimensions are approximate and floor plans are not to scale
- Through a Homewise Home For Life Plan people aged 60+ can secure this property for up to 59% less, by purchasing a Lifetime Lease.



13157193/20231025/JH/HS1