



**Price**  
**£300,000**

**Freehold**

4x  2x  1x 

**Little Court, Lower Fant  
Road, Maidstone, Kent  
ME16**

*Wards*  
Helping you move forwards





## Main features

- Recently refurbished family house
- No forward chain
- 2 bathrooms, 1 with a waterproof television
- Double driveway for 2 cars
- Convenient location for access to Maidstone West station, schools and the town centre

## Accommodation

### GROUND FLOOR

Hallway  
Kitchen : 13'2 x 5'7 (4.02m x 1.70m)  
Lounge/Diner: 13'0 x 12'7 (3.97m x 3.84m)

### FIRST FLOOR

Landing  
Bedroom 3: 10'1 x 7'3 (3.08m x 2.21m)  
Bedroom 4: 11'8 x 9'2 (3.56m x 2.80m)  
Bathroom: 6'7 x 6'5 (2.01m x 1.96m)

### SECOND FLOOR

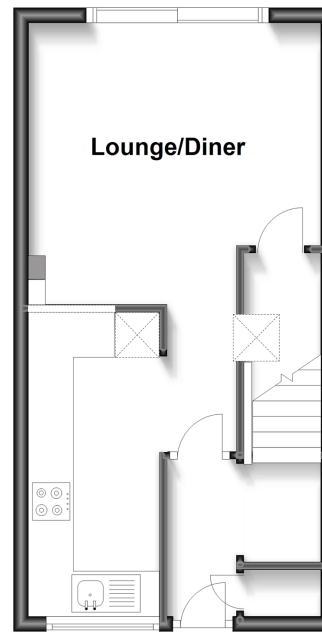
Landing  
Bedroom 1: 10'7 x 10'4 (3.23m x 3.15m)  
Bedroom 2: 12'8 x 10'1 (3.86m x 3.08m)  
Bathroom: 6'8 x 5'4 (2.03m x 1.63m)

### OUTSIDE

Rear Garden  
Front Garden  
Driveway

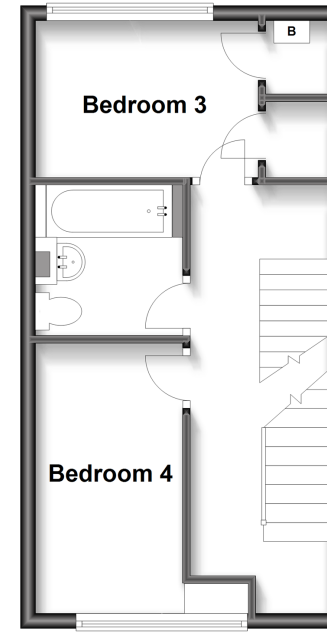
### Ground Floor

Approx. 30.9 sq. metres (332.2 sq. feet)



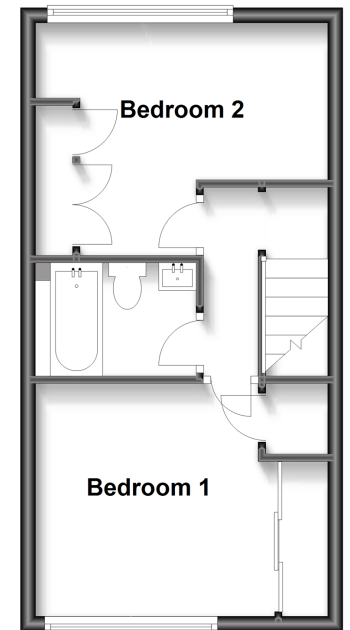
### First Floor

Approx. 30.9 sq. metres (332.2 sq. feet)



### Second Floor

Approx. 31.2 sq. metres (336.2 sq. feet)



**Call Maidstone - 01622 683737 ■ wardsofkent.co.uk**

■ Legal advice should be taken to verify fixtures/fittings, planning, alterations and/or lease details

■ Appliances & services are untested, dimensions are approximate and floor plans are not to scale



13157200/20240328/SS1/MB