



Price
£170,000

Leasehold

1x  1x  1x 

**Tonbridge Road,
Maidstone, Kent ME16**

OVER 60?

Secure this property
for up to **59% less!**



Video Tour available

Wards
Helping you move forwards



Main features

- Neatly presented first floor maisonette with neutral décor
- Benefiting from fitted storage space & a separate utility room
- Shared, secure rear garden
- Allocated parking
- Fantastic location, just a short walk from local shops, train stations & the town centre

Accommodation

FIRST FLOOR

Entrance Hall

Lounge: 14'11 x 14'7 (4.55m x 4.45m)

Kitchen: 10'11 x 4'8 (3.33m x 1.42m)

Utility Area: 5'9 x 4'5 (1.75m x 1.35m)

Bedroom 1: 10'4 x 8'0 (3.15m x 2.44m)

Bathroom

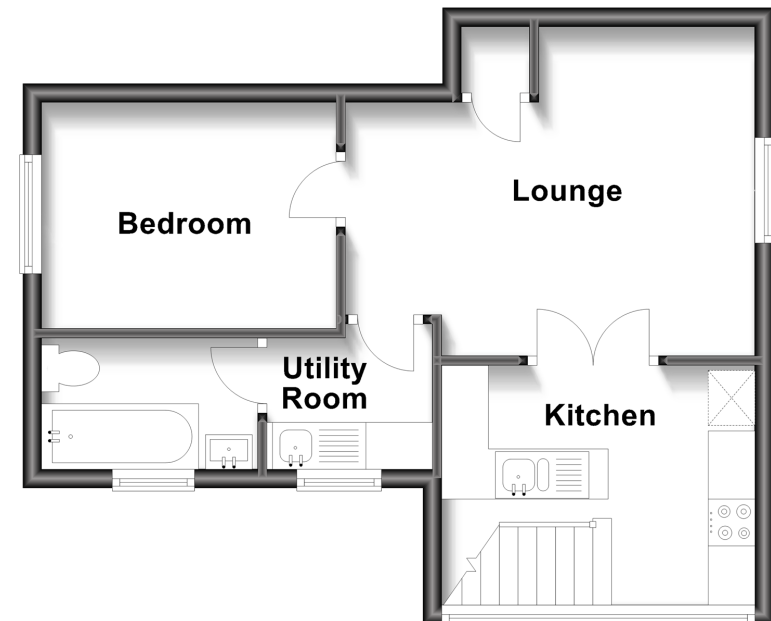
OUTSIDE

Communal Garden

Allocated Parking

First Floor

Approx. 37.3 sq. metres (401.6 sq. feet)



Call Maidstone - 01622 683737 ■ wardsofkent.co.uk

■ Legal advice should be taken to verify fixtures/fittings, planning, alterations and/or lease details
 ■ Through a Homewise Home For Life Plan people aged 60+ can secure this property for up to 59% less, by purchasing a Lifetime Lease.

■ Appliances & services are untested, dimensions are approximate and floor plans are not to scale