



OVER 60?

Secure this property
for up to **59% less!**

Price
£235,000

Freehold

2x  1x  2x 

**Cross Street, Maidstone,
Kent ME14**

Wards
Helping you move forwards



Main features

- Victorian period character style house, no forward chain
- Town centre location providing excellent access for amenities
- In need of some modernisation
- Separate upstairs bathroom
- Short walk from Maidstone East station, the shopping area along with easy access for the motorways

Accommodation

GROUND FLOOR

Hallway

Dining Room: 11'0 x 9'0 (3.36m x 2.75m)

Lounge: 11'1 x 11'0 (3.38m x 3.36m)

Kitchen: 9'1 x 7'8 (2.77m x 2.34m)

FIRST FLOOR

Landing

Bedroom 1: 11'1 x 11'0 (3.38m x 3.36m)

Bedroom 2: 11'2 x 9'0 (3.41m x 2.75m)

Bathroom

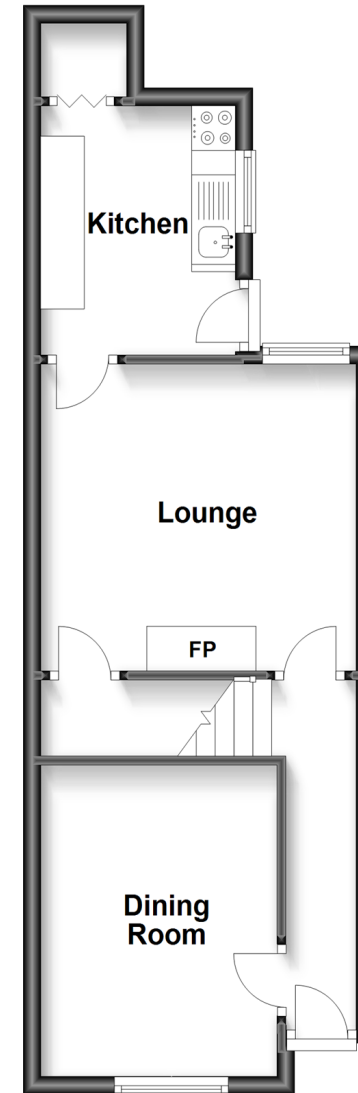
OUTSIDE

Front Garden

Rear Garden

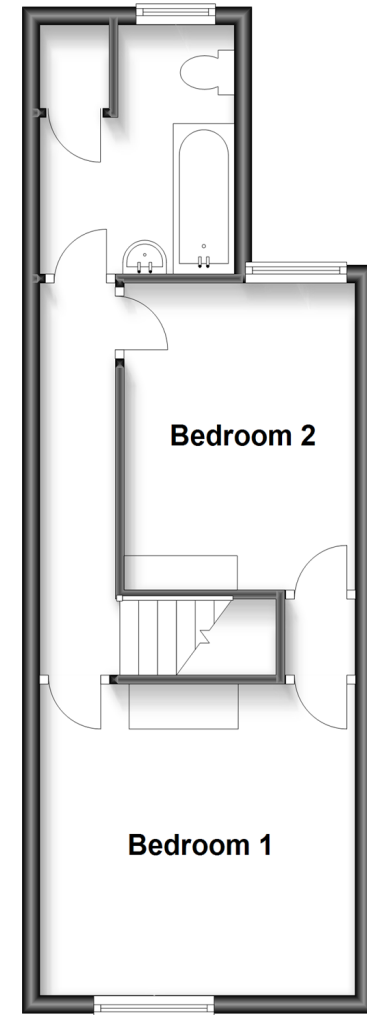
Ground Floor

Approx. 35.6 sq. metres (383.5 sq. feet)



First Floor

Approx. 35.2 sq. metres (379.3 sq. feet)



Call Maidstone - 01622 683737 ■ wardsofkent.co.uk

- Legal advice should be taken to verify fixtures/fittings, planning, alterations and/or lease details
- Appliances & services are untested, dimensions are approximate and floor plans are not to scale
- Through a Homewise Home For Life Plan people aged 60+ can secure this property for up to 59% less, by purchasing a Lifetime Lease.



13157278/20230617/CV/MB