



**OVER 60?**

Secure this property  
for up to **59% less!**

**Price**  
**£250,000**

**Freehold**

2x  1x  2x 

**Well Road, Maidstone,  
Kent ME14**

*Wards*  
Helping you move forwards





## Main features

- Spacious feeling open plan interior
- Double chamber cellar
- Off road parking to rear
- No chain
- Very convenient location, close to station, shops and amenities

## Accommodation

### GROUND FLOOR

Hallway

Lounge/Diner: 23'3 x 11'6 (7.09m x 3.51m)

Kitchen: 8'7 x 7'3 (2.62m x 2.21m)

### BASEMENT

Cellar 1: 10'0 x 7'3 (3.05m x 2.21m)

Cellar 2: 10'4 x 10'2 (3.15m x 3.10m)

### FIRST FLOOR

Landing

Bedroom 1: 11'8 x 10'8 (3.56m x 3.25m)

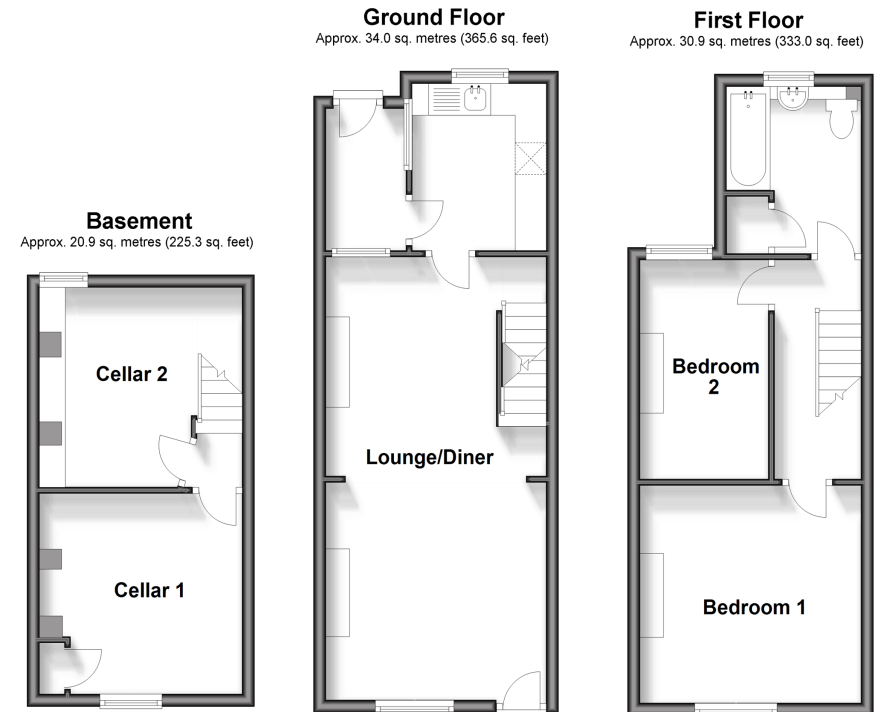
Bedroom 2: 11'3 x 6'9 (3.43m x 2.06m)

Bathroom: 8'7 x 7'4 (2.62m x 2.24m)

### OUTSIDE

Rear Garden

Parking To Rear



**Call Maidstone - 01622 683737 ■ [wardsofkent.co.uk](http://wardsofkent.co.uk)**

■ Legal advice should be taken to verify fixtures/fittings, planning, alterations and/or lease details  
 ■ Through a Homewise Home For Life Plan people aged 60+ can secure this property for up to 59% less, by purchasing a Lifetime Lease.

■ Appliances & services are untested, dimensions are approximate and floor plans are not to scale