



Price
£250,000

Freehold

2x  1x  1x 

**Lower Boxley Road,
Maidstone, Kent ME14**

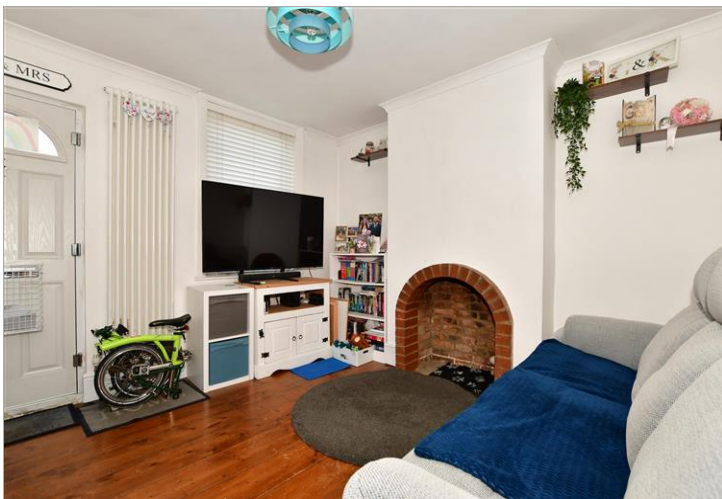
OVER 60?

Secure this property
for up to **59% less!**



Video Tour available

Wards
Helping you move forwards



Main features

- Victorian house within walking distance of the town centre
- Double glazing & central heating
- Useful cellar conversion, double bedrooms
- Fitted kitchen & ground floor bathroom
- Large rear garden with elevated deck area

Accommodation

GROUND FLOOR

Lounge: 11'4 x 10'10 (3.46m x 3.30m)

Kitchen: 11'8 x 9'8 (3.56m x 2.95m)

Lobby

Bathroom

BASEMENT

Cellar: 10'4 x 9'6 (3.15m x 2.90m)

FIRST FLOOR

Landing

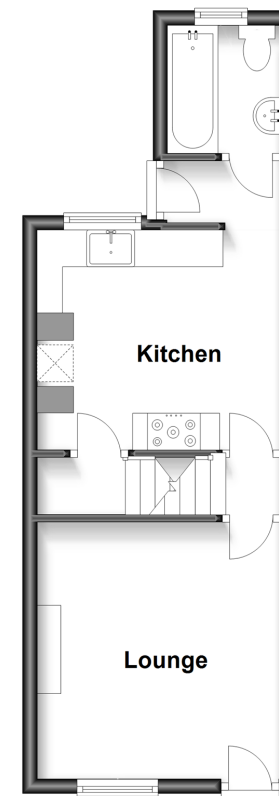
Bedroom 1: 11'4 x 10'9 (3.46m x 3.28m)

Bedroom 2: 10'10 x 9'7 (3.30m x 2.92m)

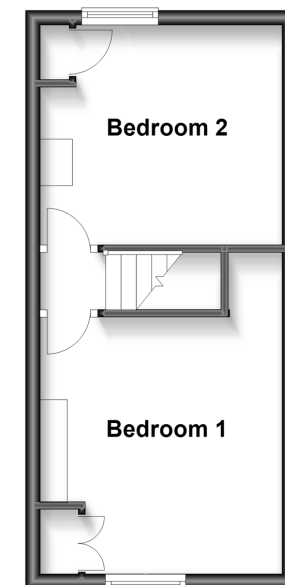
OUTSIDE

Rear Garden

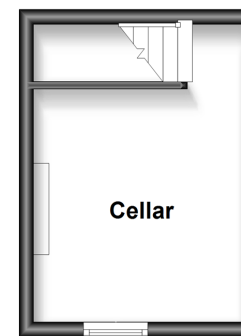
Ground Floor
Approx. 29.4 sq. metres (316.5 sq. feet)



First Floor
Approx. 25.0 sq. metres (269.4 sq. feet)



Basement
Approx. 11.8 sq. metres (126.8 sq. feet)



Call Maidstone - 01622 683737 ■ wardsofkent.co.uk

- Legal advice should be taken to verify fixtures/fittings, planning, alterations and/or lease details
- Appliances & services are untested, dimensions are approximate and floor plans are not to scale
- Through a Homewise Home For Life Plan people aged 60+ can secure this property for up to 59% less, by purchasing a Lifetime Lease.



13157284/20230531/JG/DS