

**OVER 60?**

Secure this property  
for up to **59% less!**



**Price**

**£610,000**

**Freehold**

4x  1x  1x 

Bargrove Road, Maidstone, Kent ME14

*Wards*  
Helping you move forwards





## Main features

- Located within the Woodlands Estate to the rear of Vinters Park
- Generous plot to side & rear with detached log cabin
- Garage & off road parking with potential to extend
- Much improved internally
- A wonderful opportunity to acquire that forever home

## Accommodation

### GROUND FLOOR

Entrance Porch  
Hallway  
Cloakroom  
Lounge: 18'4 x 11'2 (5.59m x 3.41m)  
Kitchen/Diner: 18'5 x 9'9 (5.62m x 2.97m)  
Utility Room: 8'2 x 6'6 (2.49m x 1.98m)

### FIRST FLOOR

#### LANDING

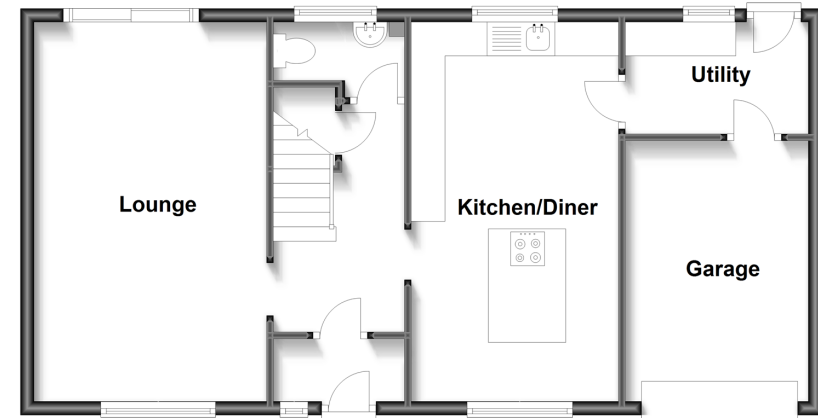
Bedroom 1: 11'4 x 9'6 (3.46m x 2.90m)  
Bedroom 2: 11'3 x 10'0 (3.43m x 3.05m)  
Bedroom 3: 10'0 x 6'9 (3.05m x 2.06m)  
Bedroom 4: 11'4 x 7'4 (3.46m x 2.24m)  
Shower Room

#### OUTSIDE

Rear Garden  
Log Cabin: 18'6 x 15'6 (5.64m x 4.73m)  
Front Garden  
Driveway  
Integral Garage: 16'0 x 8'0 (4.88m x 2.44m)

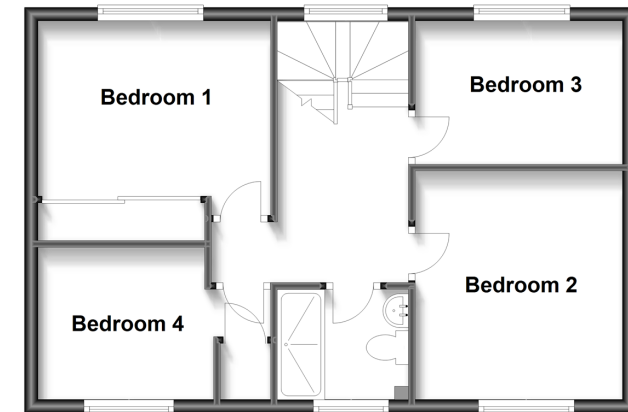
### Ground Floor

Approx. 64.0 sq. metres (689.0 sq. feet)



### First Floor

Approx. 48.3 sq. metres (520.0 sq. feet)



**Call Maidstone - 01622 683737 ■ [wardsofkent.co.uk](http://wardsofkent.co.uk)**

- Legal advice should be taken to verify fixtures/fittings, planning, alterations and/or lease details
- Appliances & services are untested, dimensions are approximate and floor plans are not to scale
- Through a Homewise Home For Life Plan people aged 60+ can secure this property for up to 59% less, by purchasing a Lifetime Lease.



13157289/20221228/CV/DS